



**Water Monitoring Result at C7 - Windsor House  
Mid-Flood Tide**

Date	Time	Weather Condition	Sampling Depth m	Water Temperature °C				pH			Salinity ppt			DO Saturation %			DO mg/L		Turbidity NTU			Suspended Solids mg/L		
				Value		Average	Value		Average	Value		Average	Value		Average	Value		Average	Value		Average	Value		Average
28/12/17	16:07	Fine	Middle	-	19.30	19.30	19.35	8.12	8.12	8.12	31.89	31.89	31.88	87.5	87.4	87.6	6.67	6.66	6.65	6.51	6.51	6.51	<2	<2
	16:09		Middle	-	19.40	19.40		8.12	8.12		31.87	31.87		87.5	87.8		6.66	6.62		6.51	6.51			
30/12/17	14:30	Fine	Middle	-	21.00	21.00	21.15	8.10	8.10	8.10	31.81	31.81	31.80	92.8	93.1	93.0	6.84	6.81	6.84	5.75	5.75	5.71	2	2.00
	14:32		Middle	-	21.30	21.30		8.09	8.09		31.79	31.79		92.9	93.3		6.84	6.87		5.68	5.66		2	
3/1/18	17:25	Fine	Middle	-	19.50	19.50	19.55	8.09	8.09	8.10	31.65	31.65	31.71	93.0	93.1	93.0	7.07	7.08	7.08	7.03	7.04	7.04	7	6.50
	17:27		Middle	-	19.60	19.60		8.10	8.10		31.76	31.76		93.1	92.9		7.08	7.07		7.04	7.04		6	
5/1/18	17:45	Cloudy	Middle	-	18.90	18.90	18.90	8.13	8.13	8.13	32.10	32.10	32.10	92.8	93.4	92.9	7.13	7.17	7.14	3.48	3.43	3.42	9	7.00
	17:46		Middle	-	18.90	18.90		8.13	8.13		32.10	32.10		93.1	92.3		7.15	7.09		3.39	3.37		5	
8/1/18	12:40	Cloudy	Middle	-	18.30	18.30	18.20	8.16	8.16	8.16	31.36	31.36	31.61	92.5	92.7	92.5	7.23	7.25	7.23	5.30	5.35	5.35	3	3.50
	14:42		Middle	-	18.10	18.10		8.16	8.16		32.36	31.36		92.3	92.3		7.21	7.22		5.34	5.41		4	
10/1/18	14:25	Fine	Middle	-	17.50	17.50	17.50	8.16	8.16	8.16	31.12	31.12	31.12	96.6	96.6	96.4	7.67	7.67	7.66	5.40	5.36	5.36	3	4.00
	14:27		Middle	-	17.50	17.50		8.16	8.16		31.12	31.12		96.2	96.3		7.64	7.65		5.34	5.34		5	
12/1/18	17:10	Fine	Middle	-	18.00	18.00	18.10	8.13	8.13	8.14	31.35	31.35	31.35	98.0	98.0	98.0	7.65	7.65	7.66	10.83	10.83	10.83	8	8.50
	17:12		Middle	-	18.20	18.20		8.15	8.15		31.3.5	31.35		97.8	98.2		7.63	7.69		10.81	10.83		9	
15/1/18	15:00	Fine	Middle	-	18.20	18.20	18.30	8.18	8.18	8.18	31.40	31.40	31.39	92.9	93.1	92.8	7.29	7.30	7.29	6.25	6.20	6.20	4	4.00
	15:02		Middle	-	18.40	18.40		8.18	8.18		31.37	31.37		92.9	92.4		7.29	7.26		6.17	6.16		4	
17/1/18	16:55	Fine	Middle	-	19.70	19.30	19.60	8.15	8.15	8.16	31.31	31.31	31.30	96.4	95.8	95.4	7.35	7.30	7.28	4.87	4.87	4.87	4	4.50
	16:57		Middle	-	19.70	19.70		8.16	8.16		31.28	31.28		94.7	94.8		7.21	7.24		4.88	4.87		5	
19/1/18	20:22	Cloudy	Middle	-	18.20	18.20	18.20	8.06	8.06	8.06	31.52	31.52	31.52	86.7	88.2	87.1	6.76	6.88	6.80	1.99	2.05	2.02	5	5.50
	20:23		Middle	-	18.20	18.20		8.06	8.06		31.52	31.52		87.2	86.4		6.80	6.75		2.03	2.00		6	
23/1/18	12:00	Fine	Middle	-	19.40	19.40	19.45	8.18	8.18	8.19	31.21	31.21	31.21	92.7	92.5	92.4	7.08	7.07	7.06	5.57	5.56	5.54	5	5.00
	12:02		Middle	-	19.50	19.50		8.19	8.19		31.20	31.20		92.2	92.2		7.04	7.05		5.52	5.52		5	
25/1/18	14:40	Fine	Middle	-	18.50	18.50	18.55	8.34	8.34	8.34	31.52	31.52	31.52	97.9	97.3	96.9	7.56	7.54	7.51	3.99	3.01	3.77	3	4.00
	14:42		Middle	-	18.60	18.60		8.34	8.34		31.52	31.52		96.2	96.3		7.46	7.46		4.04	4.05		5	

Remarks:  
Single underline denotes exceedance over Action Level.  
Double underline denotes exceedance over Limit Level.



**Water Monitoring Result at C1 - HKCEC Extension  
Mid-Flood Tide**

Date	Time	Weather Condition	Sampling Depth	m	Water Temperature			pH			Salinity			DO Saturation			DO		Turbidity			Suspended Solids		
					°C			-			ppt			%			mg/L		NTU			mg/L		
					Value	Average		Value	Average		Value	Average		Value	Average		Value	Average		Value	Average	Value	Average	Value
28/12/17	15:06	Fine	Middle	3.5	18.60	18.60	18.65	8.18	8.18	8.18	32.18	32.08	32.13	85.3	84.6	84.9	6.59	6.52	6.56	7.07	7.16	7.07	3	4.00
	15:08		Middle	3.5	18.70	18.70		8.18	8.18		32.12	32.12		84.7	85.1		84.9	6.54		6.57	7.04		7.00	
30/12/17	16:20	Fine	Middle	3.0	18.90	18.90	18.90	8.16	8.16	8.16	31.93	31.93	31.96	92.1	92.5	92.5	7.08	7.11	7.11	5.75	5.69	5.69	4	4.00
	16:22		Middle	3.0	18.90	18.90		8.16	8.16		31.99	31.99		92.6	92.7		92.5	7.13		7.13	7.11		5.67	
3/1/18	16:40	Fine	Middle	2.5	19.00	19.00	19.05	8.02	8.02	8.03	31.95	31.95	31.96	95.0	95.1	95.0	7.28	7.28	7.28	6.67	6.88	6.83	5	4.00
	16:42		Middle	2.5	19.10	19.10		8.04	8.04		31.97	31.97		94.9	95.0		95.0	7.27		7.27	7.28		6.87	
5/1/18	19:19	Cloudy	Middle	3.0	18.40	18.40	18.40	8.05	8.05	8.05	32.11	32.11	32.11	85.6	86.6	86.0	6.64	6.72	6.67	3.06	3.02	3.02	4	5.50
	19:20		Middle	3.0	18.40	18.40		8.05	8.05		32.11	32.11		86.1	85.5		86.0	6.68		6.63	6.67		3.00	
8/1/18	12:05	Cloudy	Middle	3.0	18.10	18.10	18.10	8.15	8.15	8.16	31.58	31.58	31.60	92.8	92.7	92.5	7.26	7.25	7.24	7.68	7.54	7.62	6	5.50
	12:07		Middle	3.0	18.10	18.10		8.16	8.16		31.61	31.61		92.2	92.4		92.5	7.22		7.23	7.24		7.61	
10/1/18	12:10	Fine	Middle	3.0	17.00	17.00	17.00	8.21	8.21	8.21	31.38	31.38	31.39	95.6	95.7	94.7	7.64	7.65	7.63	5.67	5.77	5.71	4	3.50
	12:12		Middle	3.0	17.00	17.00		8.21	8.21		31.39	31.39		95.2	92.1		94.7	7.61		7.60	7.63		5.72	
12/1/18	15:35	Fine	Middle	3.0	16.20	16.20	16.20	8.23	8.23	8.23	31.65	31.65	31.60	97.0	97.1	97.0	7.88	7.88	7.88	6.26	6.34	6.33	4	3.50
	15:37		Middle	3.0	16.20	16.20		8.23	8.23		31.55	31.55		97.0	97.0		97.0	7.88		7.88	7.88		6.36	
15/1/18	16:10	Fine	Middle	3.0	17.10	17.10	17.15	8.20	8.20	8.20	31.60	31.60	31.60	92.4	92.6	92.3	7.36	7.38	7.35	6.09	6.04	6.06	4	4.50
	16:12		Middle	3.0	17.20	17.20		8.20	8.20		31.59	31.59		92.1	92.0		92.3	7.34		7.33	7.35		6.05	
17/1/18	16:00	Fine	Middle	2.5	17.90	17.90	18.00	8.15	8.15	8.15	31.55	31.55	31.55	90.3	89.9	90.0	7.08	7.04	7.05	6.52	6.47	6.46	9	8.00
	16:02		Middle	2.5	18.10	18.10		8.15	8.15		31.54	31.54		89.9	89.8		90.0	7.04		7.03	7.05		6.43	
19/1/18	19:45	Cloudy	Middle	3.0	18.20	18.20	18.20	8.05	8.05	8.05	31.94	31.94	31.94	82.1	84.0	83.4	6.16	6.30	6.26	4.47	4.59	4.63	7	6.00
	19:46		Middle	3.0	18.20	18.20		8.05	8.05		31.94	31.94		84.4	83.1		83.4	6.33		6.23	6.26		4.78	
23/1/18	10:10	Fine	Middle	3.0	18.00	18.00	18.00	8.26	8.26	8.26	31.24	31.24	31.24	92.3	92.6	92.5	7.25	7.27	7.26	9.08	9.07	9.08	7	7.00
	10:12		Middle	3.0	18.00	18.00		8.26	8.26		31.23	31.23		92.6	92.3		92.5	7.26		7.24	7.26		9.07	
25/1/18	14:00	Fine	Middle	3.0	17.50	17.50	17.50	8.40	7.84	8.26	31.77	31.77	31.77	96.9	96.9	96.6	7.66	7.65	7.63	1.89	1.88	1.89	6	6.00
	14:02		Middle	3.0	17.50	17.50		8.40	8.40		31.77	31.77		96.1	96.3		96.6	7.59		7.61	7.63		1.90	

Remarks:  
Single underline denotes exceedance over Action Level.  
Double underline denotes exceedance over Limit Level.



**Water Monitoring Result at P1 - HKCEC Phase I  
Mid-Flood Tide**

Date	Time	Weather Condition	Sampling Depth		Water Temperature			pH			Salinity			DO Saturation			DO		Turbidity			Suspended Solids		
			m		°C		-		ppt		%		mg/L		NTU		mg/L							
					Value	Average	Value	Average	Value	Average	Value	Average	Value	Average	Value	Average	Value	Average	Value	Average				
28/12/17	14:50	Fine	Middle	3.5	19.50	19.50	19.60	8.14	8.14	8.14	32.26	32.26	32.19	84.4	82.9	83.8	6.40	6.29	6.35	7.21	7.11	7.14	2	2.00
	14:52		Middle	3.5	19.70	19.70		8.14	8.14		32.12	32.12		84.5	83.2		6.41	6.31		7.12	7.13		2	
30/12/17	16:00	Fine	Middle	3.0	19.80	19.80	19.90	8.15	8.15	8.15	32.03	32.03	32.02	96.0	95.8	95.4	7.24	7.22	7.19	5.52	5.43	5.44	4	4.00
	16:02		Middle	3.0	20.00	20.00		8.15	8.15		32.01	32.01		95.4	94.3		7.19	7.11		5.41	5.40		4	
3/1/18	16:20	Fine	Middle	2.5	19.90	19.90	20.30	7.36	7.37	7.39	32.01	32.01	32.01	97.6	97.5	97.4	7.26	7.25	7.24	7.07	7.05	7.04	8	7.50
	16:22		Middle	2.5	20.70	20.70		7.42	7.42		32.01	32.01		97.0	97.3		7.21	7.23		7.06	6.99		7	
5/1/18	18:45	Cloudy	Middle	3.0	18.30	18.30	18.30	8.24	8.24	8.24	32.32	32.32	32.32	89.4	89.9	90.3	6.94	6.98	7.01	2.59	2.61	2.57	5	5.00
	18:46		Middle	3.0	18.30	18.30		8.24	8.24		32.32	32.32		91.0	90.9		7.06	7.05		2.55	2.52		5	
8/1/18	11:45	Cloudy	Middle	3.0	18.30	18.30	18.30	8.03	8.03	8.06	31.58	31.58	31.58	93.4	94.3	93.8	7.27	7.34	7.31	6.03	6.02	6.07	5	6.00
	11:47		Middle	3.0	18.30	18.30		8.09	8.09		31.57	31.57		93.9	93.6		7.31	7.30		6.09	6.15		7	
10/1/18	11:50	Fine	Middle	3.0	16.80	16.80	16.80	8.18	8.18	8.19	31.63	31.63	31.63	97.9	98.5	97.6	7.84	7.89	7.82	6.99	7.06	7.07	6	6.50
	11:52		Middle	3.0	16.80	16.80		8.20	8.20		31.63	31.63		97.7	96.4		7.83	7.73		7.09	7.13		7	
12/1/18	15:15	Fine	Middle	3.0	16.80	16.80	16.90	8.18	8.18	8.19	31.60	31.60	31.60	97.1	98.2	98.2	7.77	7.85	7.85	8.37	8.29	8.31	6	5.50
	15:17		Middle	3.0	17.00	17.00		8.20	8.20		31.60	31.60		98.9	98.5		7.91	7.88		8.29	8.29		5	
15/1/18	15:50	Fine	Middle	3.0	18.50	18.50	18.50	8.16	8.16	8.17	31.79	31.79	31.79	96.5	95.8	96.0	7.47	7.42	7.43	7.90	7.99	8.01	4	4.00
	15:52		Middle	3.0	18.50	18.50		8.17	8.17		31.79	31.79		95.8	95.8		7.42	7.41		8.05	8.09		4	
17/1/18	15:40	Fine	Middle	2.5	20.00	20.00	20.15	8.09	8.09	8.10	31.74	31.74	31.74	94.5	94.2	94.0	7.10	7.09	7.07	6.80	6.76	6.80	4	4.00
	15:42		Middle	2.5	20.30	20.30		8.11	8.11		31.73	31.73		93.6	93.8		7.03	7.04		6.81	6.81		4	
19/1/18	19:14	Cloudy	Middle	3.0	18.50	18.50	18.50	8.06	8.06	8.06	32.04	32.04	32.04	82.4	81.9	82.3	6.05	6.02	6.04	4.90	4.99	5.00	3	4.50
	19:15		Middle	3.0	18.50	18.50		8.06	8.06		32.04	32.04		82.8	81.9		6.08	6.02		5.02	5.08		6	
23/1/18	9:50	Fine	Middle	3.0	18.10	18.10	18.20	8.24	8.24	8.24	31.21	31.21	31.21	94.4	94.0	93.9	7.39	7.35	7.33	7.49	7.59	7.56	9	9.50
	9:52		Middle	3.0	18.30	18.30		8.24	8.24		31.20	31.20		94.0	93.2		7.30	7.29		7.60	7.55		10	
25/1/18	13:40	Fine	Middle	3.0	17.90	17.90	18.00	8.34	8.34	8.35	31.71	31.71	31.71	107.8	107.4	104.7	8.04	8.01	7.77	4.07	3.99	4.01	7	6.00
	13:42		Middle	3.0	18.10	18.10		8.36	8.36		31.70	31.70		102.1	101.5		7.09	7.94		3.99	3.99		5	

Remarks:  
Single underline denotes exceedance over Action Level.  
Double underline denotes exceedance over Limit Level.



**Water Monitoring Result at P3 - APA  
Mid-Flood Tide**

Date	Time	Weather Condition	Sampling Depth		Water Temperature			pH			Salinity			DO Saturation		DO		Turbidity		Suspended Solids				
					°C			-			ppt			%		mg/L		NTU		mg/L				
			m	Value	Average	Value	Average	Value	Average	Value	Average	Value	Average	Value	Average	Value	Average	Value	Average	Value	Average			
28/12/17	14:54	Fine	Middle	3.5	19.00	19.00	19.10	8.15	8.15	8.15	32.12	32.12	32.11	87.8	82.5	85.7	6.71	6.69	6.65	6.78	6.77	6.81	2	3.00
	14:56		Middle	3.5	19.20	19.20		8.15	8.15		32.09	32.09		85.5	87.0		6.53	6.65		6.78	6.90		4	
30/12/17	16:05	Fine	Middle	3.0	19.20	19.20	19.20	8.16	8.16	8.16	31.98	31.98	31.96	92.3	91.6	91.9	7.06	7.00	7.02	5.76	5.81	5.77	5	5.50
	16:07		Middle	3.0	19.20	19.20		8.16	8.16		31.93	31.93		91.6	91.9		7.00	7.02		5.75	5.75		6	
3/1/18	16:25	Fine	Middle	2.5	19.30	19.30	19.40	7.84	7.81	7.84	31.98	31.98	31.98	91.5	92.1	92.1	6.97	7.01	7.01	6.09	6.15	6.15	5	4.00
	16:27		Middle	2.5	19.50	19.50		7.85	7.85		31.97	31.97		92.9	92.0		7.06	6.99		6.19	6.18		3	
5/1/18	18:51	Cloudy	Middle	3.0	18.50	18.50	18.50	8.17	8.17	8.17	32.29	32.29	32.29	86.6	87.4	87.4	6.69	6.76	6.75	3.27	3.00	3.01	6	6.00
	18:52		Middle	3.0	18.50	18.50		8.17	8.17		32.29	32.29		88.1	87.4		6.81	6.75		2.86	2.92		6	
8/1/18	11:50	Cloudy	Middle	3.0	18.30	18.30	18.30	8.11	8.11	8.12	31.58	31.58	31.58	93.3	93.4	93.2	7.27	7.28	7.27	7.13	7.15	7.12	4	3.50
	11:52		Middle	3.0	18.30	18.30		8.12	8.12		31.57	31.57		92.7	93.5		7.23	7.29		7.11	7.08		3	
10/1/18	11:55	Fine	Middle	3.0	16.70	16.70	16.75	8.21	8.21	8.21	31.06	31.06	31.04	97.4	97.7	97.5	7.82	7.84	7.83	6.39	6.36	6.33	2	3.00
	11:57		Middle	3.0	16.80	16.80		8.21	8.21		31.02	31.02		97.2	97.7		7.80	7.84		6.30	6.25		4	
12/1/18	15:20	Fine	Middle	3.0	16.10	16.10	16.15	8.22	8.22	8.22	31.57	31.57	31.57	96.0	96.4	96.3	7.79	7.83	7.81	5.75	5.75	5.76	5	4.00
	15:22		Middle	3.0	16.20	16.20		8.22	8.22		31.56	31.56		96.2	96.4		7.81	7.82		5.79	5.76		3	
15/1/18	15:55	Fine	Middle	3.0	17.30	17.30	17.30	8.19	8.19	8.19	31.65	31.65	31.64	94.0	94.1	93.8	7.45	7.45	7.43	7.65	7.68	7.61	4	4.50
	15:57		Middle	3.0	17.30	17.30		8.19	8.19		31.62	31.62		93.8	93.2		7.43	7.38		7.39	7.70		5	
17/1/18	15:45	Fine	Middle	2.5	18.70	18.70	18.80	8.12	8.12	8.13	31.63	31.63	31.63	91.6	91.6	91.5	7.06	7.06	7.05	6.62	6.62	6.64	5	4.50
	15:47		Middle	2.5	18.90	18.90		8.13	8.13		31.63	31.63		91.4	91.4		7.04	7.04		6.67	6.66		4	
19/1/18	19:21	Cloudy	Middle	3.0	18.30	18.30	18.30	8.07	8.07	8.07	32.06	32.06	32.06	83.4	82.7	82.7	6.24	6.19	6.19	4.61	4.20	4.37	6	6.00
	19:22		Middle	3.0	18.30	18.30		8.07	8.07		32.06	32.06		82.8	82.0		6.20	6.14		4.39	4.28		6	
23/1/18	9:55	Fine	Middle	3.0	17.90	17.90	17.95	8.25	8.50	8.31	31.19	31.19	31.19	92.7	93.0	92.3	7.29	7.30	7.25	7.11	7.08	7.12	7	7.50
	9:57		Middle	3.0	18.00	18.00		8.25	8.25		31.19	31.19		92.2	91.4		7.24	7.18		7.15	7.14		8	
25/1/18	13:45	Fine	Middle	3.0	17.50	17.50	17.55	8.38	8.38	8.38	31.77	31.77	31.77	99.5	99.7	99.4	7.86	7.87	7.85	2.68	2.66	2.59	5	5.00
	13:47		Middle	3.0	17.60	17.60		8.38	8.38		31.77	31.77		99.1	99.1		7.83	7.83		2.50	2.50		5	

Remarks:  
Single underline denotes exceedance over Action Level.  
Double underline denotes exceedance over Limit Level.



**Water Monitoring Result at P4 - SOC  
Mid-Flood Tide**

Date	Time	Weather Condition	Sampling Depth		Water Temperature			pH			Salinity			DO Saturation		DO		Turbidity			Suspended Solids			
					°C			-			ppt			%		mg/L		NTU			mg/L			
			m	Value	Average	Value	Average	Value	Average	Value	Average	Value	Average	Value	Average	Value	Average	Value	Average	Value	Average	Value	Average	
28/12/17	14:58	Fine	Middle	3.5	18.80	18.80	18.85	8.17	8.17	8.17	32.13	32.13	32.13	86.6	86.2	86.3	6.66	6.62	6.63	6.43	6.43	6.43	2	2.00
	15:00		Middle	3.5	18.90	18.90		8.17	8.17		32.12	32.12		86.7	85.8		6.66	6.59		6.43	6.43		2	
30/12/17	16:10	Fine	Middle	3.0	19.00	19.00	19.05	8.16	8.16	8.16	31.99	31.99	32.00	92.1	91.9	91.8	7.05	7.04	7.03	6.78	6.77	6.81	4	4.00
	16:12		Middle	3.0	19.10	19.10		8.15	8.15		32.00	32.00		91.4	91.7		7.00	7.02		6.84	6.85		4	
3/1/18	16:30	Fine	Middle	2.5	19.00	19.00	19.10	7.89	7.89	7.93	31.99	31.99	31.98	93.0	92.2	92.3	7.12	7.05	7.06	6.74	6.67	6.63	6	5.00
	16:32		Middle	2.5	19.20	19.20		7.96	7.96		31.97	31.97		92.3	91.7		7.06	7.01		6.55	6.57		4	
5/1/18	19:03	Cloudy	Middle	3.0	18.40	18.40	18.40	8.23	8.23	8.23	32.24	32.24	32.24	86.7	86.8	86.7	6.72	6.73	6.72	2.77	2.74	2.71	5	5.50
	19:04		Middle	3.0	18.40	18.40		8.23	8.23		32.24	32.24		86.5	86.6		6.70	6.71		2.66	2.68		6	
8/1/18	11:55	Cloudy	Middle	3.0	18.30	18.30	18.30	8.13	8.13	8.14	31.57	31.57	31.57	95.2	95.3	95.2	7.42	7.43	7.42	7.13	7.16	7.23	6	6.00
	11:57		Middle	3.0	18.30	18.30		8.14	8.14		31.57	31.57		95.1	95.2		7.41	7.43		7.34	7.30		6	
10/1/18	12:00	Fine	Middle	3.0	16.80	16.80	16.75	8.21	8.21	8.21	31.47	31.47	31.48	95.5	95.4	95.1	7.67	7.66	7.63	6.89	6.67	6.81	4	5.00
	12:02		Middle	3.0	16.70	16.70		8.21	8.21		31.48	31.48		95.3	94.0		7.63	7.55		6.86	6.82		6	
12/1/18	15:25	Fine	Middle	3.0	16.20	16.20	16.20	8.22	8.22	8.22	31.58	31.58	31.58	96.5	96.6	96.1	7.83	7.83	7.79	7.17	7.26	7.27	5	4.00
	15:27		Middle	3.0	16.20	16.20		8.22	8.22		31.58	31.58		95.4	95.9		7.73	7.75		7.35	7.28		3	
15/1/18	16:00	Fine	Middle	3.0	17.20	17.20	17.20	8.19	8.19	8.20	31.59	31.59	31.59	93.2	93.0	93.0	7.42	7.40	7.40	6.15	6.15	6.16	4	3.50
	16:02		Middle	3.0	17.20	17.20		8.20	8.20		31.59	31.59		92.6	93.0		7.37	7.40		6.15	6.17		3	
17/1/18	15:50	Fine	Middle	2.5	18.20	18.20	18.25	8.13	8.13	8.14	31.52	31.52	31.52	89.6	89.3	89.4	6.98	6.95	6.97	5.88	6.02	5.99	9	10.00
	15:52		Middle	2.5	18.30	18.30		8.14	8.14		31.51	31.51		89.2	89.6		6.95	6.98		6.02	6.02		11	
19/1/18	19:27	Cloudy	Middle	3.0	18.80	18.80	18.80	8.08	8.08	8.08	32.03	32.03	32.03	83.6	82.0	82.5	6.25	6.19	6.22	4.40	4.39	4.30	5	5.50
	19:28		Middle	3.0	18.80	18.80		8.08	8.08		32.03	32.03		82.4	82.1		6.22	6.20		4.21	4.18		6	
23/1/18	10:00	Fine	Middle	3.0	17.90	17.90	17.90	8.25	8.25	8.26	31.23	31.23	31.23	92.7	92.0	91.7	7.29	7.24	7.21	8.92	8.87	8.90	10	9.00
	10:02		Middle	3.0	17.90	17.90		8.26	8.26		31.22	31.22		91.1	91.0		7.16	7.15		8.89	8.90		8	
25/1/18	13:50	Fine	Middle	3.0	17.40	17.40	17.40	8.39	8.39	8.40	31.79	31.79	31.79	96.4	96.4	96.4	7.63	7.63	7.63	2.70	2.36	2.36	10	9.00
	13:52		Middle	3.0	17.40	17.40		8.40	8.40		31.79	31.79		96.7	96.2		7.65	7.61		2.26	2.11		8	

Remarks:  
Single underline denotes exceedance over Action Level.  
Double underline denotes exceedance over Limit Level.



**Water Monitoring Result at P5 - WCT / RT / IT  
Mid-Flood Tide**

Date	Time	Weather Condition	Sampling Depth	Water Temperature		pH		Salinity		DO Saturation		DO		Turbidity		Suspended Solids								
				°C		-		ppt		%		mg/L		NTU		mg/L								
				Value	Average	Value	Average	Value	Average	Value	Average	Value	Average	Value	Average	Value	Average							
28/12/17	15:02	Fine	Middle	3.5	18.70	18.70	18.70	8.18	8.18	8.18	32.11	32.11	32.11	88.1	87.9	88.0	6.79	6.77	6.78	6.76	6.76	6.76	2	3.00
	15:04		Middle	3.5	18.70	18.70	18.70	8.18	8.18	8.18	32.11	32.11	32.11	88.6	87.5	88.0	6.83	6.74	6.78	6.77	6.74	6.76	4	
30/12/17	16:15	Fine	Middle	3.0	18.90	18.90	18.95	8.15	8.15	8.16	31.99	31.99	31.99	91.2	91.4	91.2	7.00	7.01	7.00	6.95	6.92	6.91	5	5.00
	16:17		Middle	3.0	19.00	19.00	18.95	8.16	8.16	8.16	31.99	31.99	31.99	91.4	90.9	91.2	7.01	6.99	7.00	6.86	6.89	6.91	5	
3/1/18	16:35	Fine	Middle	2.5	19.10	19.10	19.20	7.98	7.98	8.00	31.98	31.98	31.98	92.6	93.0	92.6	7.07	7.10	7.08	6.17	6.25	6.28	5	4.50
	16:37		Middle	2.5	19.30	19.30	19.20	8.02	8.02	8.00	31.97	31.97	31.98	92.8	92.1	92.6	7.08	7.05	7.08	6.34	6.35	6.28	4	
5/1/18	19:11	Cloudy	Middle	3.0	18.50	18.50	18.50	8.21	8.21	8.21	32.31	32.31	32.31	86.6	87.1	87.2	6.69	6.73	6.74	3.08	3.03	2.96	4	5.50
	19:12		Middle	3.0	18.50	18.50	18.50	8.21	8.21	8.21	32.31	32.31	32.31	88.2	87.0	87.2	6.82	6.72	6.74	2.86	2.88	2.96	7	
8/1/18	12:00	Cloudy	Middle	3.0	18.10	18.10	18.10	8.15	8.15	8.15	31.62	31.62	31.62	98.0	97.2	97.8	7.65	7.61	7.64	8.44	8.28	8.33	7	6.50
	12:02		Middle	3.0	18.10	18.10	18.10	8.15	8.15	8.15	31.62	31.62	31.62	98.2	97.6	97.8	7.67	7.63	7.64	8.28	8.31	8.33	6	
10/1/18	12:05	Fine	Middle	3.0	17.00	17.00	16.95	8.21	8.21	8.21	31.38	31.38	31.38	96.4	96.7	96.9	7.71	7.74	7.75	5.36	5.38	5.38	2	3.00
	12:07		Middle	3.0	16.90	16.90	16.95	8.21	8.21	8.21	31.38	31.38	31.38	97.4	96.9	96.9	7.80	7.76	7.75	5.37	5.39	5.38	4	
12/1/18	15:30	Fine	Middle	3.0	16.10	16.10	16.10	8.23	8.23	8.23	31.58	31.58	31.58	97.3	97.1	96.9	7.91	7.89	7.87	6.60	6.61	6.55	6	6.00
	15:32		Middle	3.0	16.10	16.10	16.10	8.23	8.23	8.23	31.58	31.58	31.58	96.4	96.8	96.9	7.83	7.85	7.87	6.54	6.44	6.55	6	
15/1/18	16:05	Fine	Middle	3.0	17.10	17.10	17.10	8.20	8.20	8.20	31.56	31.56	31.56	92.4	92.6	92.3	7.37	7.38	7.36	5.85	5.80	5.81	4	4.00
	16:07		Middle	3.0	17.10	17.10	17.10	8.20	8.20	8.20	31.56	31.56	31.56	92.2	91.8	92.3	7.35	7.32	7.36	5.77	5.81	5.81	4	
17/1/18	15:55	Fine	Middle	2.5	17.90	17.90	17.95	8.13	8.13	8.14	31.60	31.60	31.60	89.5	89.0	89.0	7.02	7.00	6.99	6.90	6.78	6.80	5	5.00
	15:57		Middle	2.5	18.00	18.00	17.95	8.14	8.14	8.14	31.59	31.59	31.60	89.1	88.4	89.0	7.00	6.93	6.99	6.76	6.74	6.80	5	
19/1/18	19:35	Cloudy	Middle	3.0	18.50	18.50	18.50	8.08	8.08	8.08	32.04	32.04	32.04	82.9	82.8	82.6	6.18	6.16	6.15	4.98	4.76	4.81	6	4.50
	19:36		Middle	3.0	18.50	18.50	18.50	8.08	8.08	8.08	32.04	32.04	32.04	83.1	81.7	82.6	6.18	6.07	6.15	4.70	4.80	4.81	3	
23/1/18	10:05	Fine	Middle	3.0	17.90	17.90	17.90	8.26	8.26	8.26	31.25	31.25	31.25	92.1	92.7	92.2	7.24	7.29	7.25	8.70	8.68	8.74	7	7.50
	10:07		Middle	3.0	17.90	17.90	17.90	8.26	8.26	8.26	31.25	31.25	31.25	92.2	91.9	92.2	7.24	7.22	7.25	8.79	8.80	8.74	8	
25/1/18	13:55	Fine	Middle	3.0	17.40	17.40	17.40	8.40	8.40	8.40	31.78	31.78	31.78	96.6	96.7	96.6	7.64	7.65	7.64	2.29	2.33	2.40	7	7.00
	13:57		Middle	3.0	17.40	17.40	17.40	8.40	8.40	8.40	31.78	31.78	31.78	96.6	96.5	96.6	7.64	7.64	7.64	2.48	2.49	2.40	7	

Remarks:  
Single underline denotes exceedance over Action Level.  
Double underline denotes exceedance over Limit Level.



**Water Monitoring Result at RW21-P789 - GEC / CRB / SHK  
Mid-Flood Tide**

Date	Time	Weather Condition	Sampling Depth		Water Temperature			pH			Salinity			DO Saturation			DO		Turbidity			Suspended Solids		
			m		°C		-		ppt		%		mg/L		NTU		mg/L							
					Value	Average	Value	Average	Value	Average	Value	Average	Value	Average	Value	Average	Value	Average	Value	Average				
28/12/17	15:40	Fine	Middle	3.5	19.00	19.00	19.10	7.91	7.91	7.97	31.71	31.71	31.72	92.6	91.0	91.4	7.09	7.03	7.01	8.32	8.32	<u>8.28</u>	6	5.50
	15:42		Middle	3.5	19.20	19.20		8.02	8.02		31.73	31.73		91.6	90.4		7.01	6.92		8.28	8.20		5	
30/12/17	14:05	Fine	Middle	3.5	21.10	21.10	21.10	8.14	8.14	8.14	32.12	32.12	32.11	93.9	94.2	94.0	6.91	6.93	6.91	7.66	7.67	7.75	6	6.00
	14:07		Middle	3.5	21.10	21.10		8.13	8.13		32.10	32.10		94.1	93.7		6.91	6.88		7.77	7.88		6	
3/1/18	16:50	Fine	Middle	3.5	19.20	19.20	19.30	8.03	8.03	8.03	31.93	31.93	31.93	96.5	96.4	95.8	7.36	7.35	7.30	6.08	6.14	6.14	3	2.50
	16:52		Middle	3.5	19.40	19.40		8.03	8.03		31.92	31.92		95.4	94.8		7.27	7.22		6.16	6.17		2	
5/1/18	18:23	Cloudy	Middle	4.0	19.00	19.00	19.00	8.01	8.02	8.02	31.35	31.35	31.35	90.0	90.9	90.8	7.07	7.14	7.13	1.98	1.99	2.00	4	6.50
	18:24		Middle	4.0	19.00	19.00		8.01	8.02		31.35	31.35		91.4	90.8		7.18	7.13		2.01	2.03		9	
8/1/18	12:15	Cloudy	Middle	4.0	18.10	18.10	18.05	8.14	8.14	8.16	31.66	31.66	31.66	98.0	97.7	97.3	7.66	7.64	7.61	10.00	10.02	<u>10.07</u>	5	6.00
	12:17		Middle	4.0	18.00	18.00		8.17	8.17		31.66	31.66		96.9	96.7		7.58	7.56		10.14	10.11		7	
10/1/18	10:20	Fine	Middle	3.5	17.20	17.20	17.20	8.00	8.00	8.05	31.30	31.30	31.30	95.8	95.4	95.5	7.63	7.60	7.61	6.67	6.67	6.68	5	4.00
	10:22		Middle	3.5	17.20	17.20		8.09	8.09		31.30	31.30		95.2	95.7		7.58	7.62		6.69	6.70		3	
12/1/18	15:50	Fine	Middle	3.5	16.80	16.80	16.80	8.22	8.22	8.23	31.62	31.62	31.62	99.4	99.7	99.6	7.97	7.98	7.98	6.40	6.52	6.45	4	4.00
	15:52		Middle	3.5	16.80	16.80		8.23	8.23		31.61	31.61		99.5	99.9		7.97	8.00		6.45	6.43		4	
15/1/18	14:05	Fine	Middle	3.5	18.30	18.30	18.45	8.15	8.15	8.17	31.80	31.80	31.80	98.7	98.2	98.6	7.65	7.62	7.65	6.89	6.86	6.87	3	3.00
	14:07		Middle	3.5	18.60	18.60		8.18	8.18		31.79	31.79		98.8	98.8		7.66	7.66		6.86	6.87		3	
17/1/18	16:15	Fine	Middle	4.0	18.20	18.20	18.30	8.15	8.15	8.16	31.38	31.38	31.38	91.3	91.1	90.7	7.12	7.10	7.07	6.14	6.15	6.15	5	4.50
	16:17		Middle	4.0	18.40	18.40		8.16	8.16		31.38	31.38		90.3	90.2		7.04	7.03		6.15	6.15		4	
19/1/18	20:05	Cloudy	Middle	4.0	18.80	18.00	18.60	8.08	8.08	8.08	32.07	32.07	32.07	82.7	82.8	82.9	6.02	6.07	6.05	3.59	4.02	3.86	6	6.00
	20:06		Middle	4.0	18.80	18.80		8.08	8.08		32.07	32.07		83.5	82.5		6.08	6.01		4.06	3.77		6	
23/1/18	10:35	Fine	Middle	4.0	18.40	18.40	18.35	8.22	8.22	8.24	30.91	30.91	30.95	96.9	97.4	97.1	7.56	7.60	7.57	7.76	7.55	7.69	7	7.00
	10:37		Middle	4.0	18.30	18.30		8.26	8.26		30.99	30.99		97.3	96.6		7.59	7.53		7.77	7.68		7	
25/1/18	14:15	Fine	Middle	4.0	17.80	17.80	17.80	8.38	8.38	8.38	31.77	31.77	31.77	97.5	97.6	97.5	7.64	7.65	7.64	1.45	1.36	1.37	3	4.00
	14:17		Middle	4.0	17.80	17.80		8.38	8.39		31.76	31.76		97.6	97.3		7.65	7.63		1.33	1.33		5	

Remarks:  
Single underline denotes exceedance over Action Level.  
Double underline denotes exceedance over Limit Level.



**Water Monitoring Result at WSD19 - Sheung Wan  
Mid-Flood Tide**

Date	Time	Weather Condition	Sampling Depth		Water Temperature			pH			Salinity			DO Saturation			DO		Turbidity		Suspended Solids			
					°C		-		ppt		%		mg/L		NTU		mg/L							
			m	Value	Average	Value	Average	Value	Average	Value	Average	Value	Average	Value	Average	Value	Average	Value	Average	Value	Average			
28/12/17	14:09	Fine	Middle	3.5	19.70	19.70	19.85	8.09	8.09	8.10	32.15	32.15	32.15	84.9	88.3	88.0	6.40	6.66	6.63	9.48	9.36	9.39	4	4.50
	14:11		Middle	3.5	20.00	20.00		8.11	8.11		32.15	32.15		89.5	89.1		6.74	6.71		9.36	9.35		5	
30/12/17	15:00	Fine	Middle	3.5	20.10	20.10	20.30	7.96	7.96	8.01	31.89	31.89	31.99	96.7	96.8	96.4	7.23	7.23	7.20	8.41	8.37	8.42	5	5.50
	15:02		Middle	3.5	20.50	20.50		8.05	8.05		32.08	32.08		96.2	95.8		7.18	7.14		8.46	8.45		6	
3/1/18	18:30	Fine	Middle	4.0	19.30	19.30	19.40	8.08	8.08	8.09	31.96	31.96	31.96	92.3	91.6	91.8	7.03	6.97	6.98	7.07	7.08	7.05	4	4.00
	18:32		Middle	4.0	19.50	19.50		8.10	8.10		31.95	31.95		91.6	91.6		6.96	6.96		7.04	7.00		4	
5/1/18	21:15	Cloudy	Middle	4.0	18.70	18.70	18.70	8.80	8.00	8.21	31.79	31.79	31.79	95.5	96.1	95.3	7.36	7.41	7.34	5.36	5.31	5.24	9	7.50
	21:16		Middle	4.0	18.70	18.70		8.01	8.01		31.79	31.79		95.3	94.2		7.31	7.27		5.10	5.18		6	
8/1/18	10:50	Cloudy	Middle	3.0	19.10	19.10	19.20	7.33	7.33	7.34	31.60	31.60	31.60	94.9	95.6	95.3	7.27	7.31	7.29	8.23	8.24	8.19	6	7.00
	10:52		Middle	3.0	19.30	19.30		7.34	7.34		31.59	31.59		95.2	95.4		7.28	7.30		8.16	8.13		8	
10/1/18	10:45	Fine	Middle	4.0	16.90	16.90	16.75	8.12	8.12	8.14	31.63	31.63	31.64	96.3	96.9	96.7	7.80	7.79	7.79	7.97	7.93	7.90	7	7.50
	10:47		Middle	4.0	16.60	16.60		8.16	8.16		31.65	31.65		96.5	97.2		7.76	7.81		7.89	7.81		8	
12/1/18	14:20	Fine	Middle	2.5	17.60	17.60	17.60	8.12	8.12	8.13	31.63	31.63	31.64	97.9	96.7	97.7	7.72	7.63	7.70	6.70	6.70	6.71	4	5.00
	14:22		Middle	2.5	17.60	17.60		8.14	8.14		31.65	31.65		97.9	98.1		7.72	7.74		6.71	6.74		6	
15/1/18	17:15	Fine	Middle	4.0	17.20	17.20	17.30	8.19	8.19	8.20	31.67	31.67	31.66	97.8	96.7	96.9	7.75	7.66	7.67	5.75	5.75	5.80	2	2.00
	17:17		Middle	4.0	17.40	17.40		8.21	8.21		31.65	31.65		96.8	96.4		7.65	7.62		5.84	5.87		2	
17/1/18	18:20	Fine	Middle	4.0	18.00	18.00	18.05	8.16	8.16	8.16	31.60	31.60	31.60	92.9	92.1	92.0	7.27	7.21	7.20	6.68	6.63	6.65	4	3.50
	18:22		Middle	4.0	18.10	18.10		8.16	8.16		31.59	31.59		92.0	91.0		7.20	7.12		6.63	6.67		3	
19/1/18	18:00	Cloudy	Middle	3.5	18.40	18.40	18.40	8.03	8.03	8.03	32.04	32.04	32.04	83.2	83.7	84.1	6.10	6.14	6.17	2.39	2.44	2.64	5	7.00
	18:01		Middle	3.5	18.40	18.40		8.03	8.03		32.04	32.04		85.1	84.5		6.24	6.20		2.81	2.90		9	
23/1/18	9:05	Fine	Middle	3.0	18.30	18.30	18.35	8.15	8.15	8.17	31.19	31.19	31.19	96.1	96.0	95.4	7.50	7.49	7.45	8.22	8.25	8.25	7	7.50
	9:07		Middle	3.0	18.40	18.40		8.19	8.19		31.19	31.19		95.2	94.3		7.43	7.36		8.30	8.23		8	
25/1/18	11:50	Fine	Middle	3.5	18.20	18.20	18.25	8.24	8.24	8.32	31.76	31.76	31.76	97.9	97.8	97.9	7.62	7.62	7.63	3.02	3.00	2.96	5	6.00
	11:52		Middle	3.5	18.30	18.30		8.39	8.39		31.75	31.75		97.8	98.2		7.62	7.64		2.91	2.92		7	

Remarks:  
Single underline denotes exceedance over Action Level.  
Double underline denotes exceedance over Limit Level.





**Water Monitoring Result at C7 - Windsor House  
Mid-Ebb Tide**

Date	Time	Weather Condition	Sampling Depth		Water Temperature		pH			Salinity			DO Saturation		DO		Turbidity		Suspended Solids					
					°C		-			ppt			%		mg/L		NTU		mg/L					
					Value	Average	Value	Average	Value	Average	Value	Average	Value	Average	Value	Average	Value	Average	Value	Average				
28/12/17	8:10	Fine	Middle	-	19.00	19.00	18.95	8.11	8.11	8.11	31.98	31.98	32.00	98.1	89.6	91.6	6.83	6.87	6.85	4.49	4.38	4.41	<2	<2
	8:12		Middle	-	18.90	18.90		8.10	8.10		32.01	32.01		89.6	89.2		6.88	6.83		4.38	4.38			
30/12/17	22:42	Cloudy	Middle	-	20.00	20.00	20.00	8.25	8.25	8.25	32.45	32.45	32.45	90.3	90.8	90.7	7.05	7.08	7.08	1.94	1.93	1.91	6	5.50
	22:43		Middle	-	20.00	20.00		8.25	8.25		32.45	32.45		91.2	90.5		7.11	7.08		1.90	1.87		5	
4/1/18	4:30	Cloudy	Middle	-	18.70	18.70	18.70	8.03	8.03	8.03	32.33	32.33	32.33	91.7	90.3	91.3	7.05	6.93	7.02	5.09	5.05	5.05	5	7.00
	4:31		Middle	-	18.70	18.70		8.03	8.03		32.33	32.33		92.0	91.3		7.08	7.02		4.98	5.07		9	
6/1/18	3:05	Cloudy	Middle	-	18.60	18.60	18.60	8.08	8.08	8.08	32.29	32.29	32.29	91.3	92.1	91.9	7.04	7.11	7.09	3.31	3.36	3.33	2	2.00
	3:06		Middle	-	18.60	18.60		8.08	8.08		32.29	32.29		92.3	92.0		7.12	7.09		3.30	3.35		2	
8/1/18	2:50	Cloudy	Middle	-	18.40	18.40	18.40	8.07	8.07	8.07	32.04	32.04	32.04	86.8	87.6	87.7	6.73	6.79	6.80	2.48	2.65	2.63	4	3.50
	2:51		Middle	-	18.40	18.40		8.07	8.07		32.04	32.04		88.7	87.6		6.88	6.79		2.69	2.70		3	
10/1/18	20:46	Cloudy	Middle	-	16.80	16.80	16.80	7.97	7.97	7.96	31.46	31.46	31.46	81.6	83.8	82.6	6.58	6.76	6.67	3.43	3.45	3.46	5	4.50
	20:47		Middle	-	16.80	16.80		7.94	7.94		31.46	31.46		83.1	81.9		6.73	6.62		3.47	3.49		4	
12/1/18	22:30	Fine	Middle	-	16.30	16.30	16.30	7.89	7.89	7.89	31.73	31.73	31.73	88.0	88.1	88.3	7.13	7.14	7.15	2.43	2.41	2.40	3	3.00
	22:31		Middle	-	16.30	16.30		7.89	7.90		31.73	31.73		88.7	88.4		7.18	7.16		2.38	2.36		<2	
15/1/18	3:07	Fine	Middle	-	16.60	16.60	16.60	8.07	8.07	8.07	31.89	31.89	31.89	89.3	88.9	89.1	7.18	7.15	7.16	2.43	2.70	2.71	2	2.50
	3:08		Middle	-	16.60	16.60		8.07	8.07		31.89	31.89		89.0	89.3		7.15	7.15		2.82	2.87		3	
18/1/18	4:02	Fine	Middle	-	17.20	17.20	17.20	8.07	8.07	8.07	31.79	31.79	31.79	82.8	82.6	82.2	6.58	6.56	6.53	1.72	1.75	1.74	3	3.00
	4:03		Middle	-	17.20	17.20		8.07	8.07		31.79	31.79		81.7	81.7		6.48	6.51		1.71	1.76		<2	
20/1/18	22:48	Cloudy	Middle	-	18.80	18.80	18.80	8.01	8.01	8.01	31.97	31.97	31.97	83.5	83.3	84.1	5.88	5.87	5.82	1.10	1.06	1.06	3	2.50
	22:49		Middle	-	18.80	18.80		8.01	8.01		31.97	31.97		87.9	81.6		5.78	5.76		1.02	1.04		2	
23/1/18	4:35	Cloudy	Middle	-	18.10	18.10	18.10	8.09	8.09	8.09	31.59	31.59	31.59	82.5	83.9	84.0	6.44	6.55	6.55	3.06	3.02	2.69	7	5.50
	4:36		Middle	-	18.10	18.10		8.09	8.09		31.59	31.59		85.2	84.3		6.64	6.57		2.45	2.22		4	
25/1/18	5:18	Cloudy	Middle	-	17.40	17.40	17.40	8.19	8.19	8.19	31.98	31.98	31.98	86.4	85.4	85.9	6.83	6.75	6.79	5.97	5.34	5.60	6	7.00
	5:19		Middle	-	17.40	17.40		8.19	8.19		31.98	31.98		86.2	85.4		6.81	6.75		5.46	5.61		8	

Remarks:  
Single underline denotes exceedance over Action Level.  
Double underline denotes exceedance over Limit Level.



**Water Monitoring Result at C1 - HKCEC  
Mid-Ebb Tide**

Date	Time	Weater Condition	Sampling Depth		Water Temperature		pH			Salinity		DO Saturation		DO		Turbidity		Suspended Solids						
					°C		-			ppt		%		mg/L		NTU		mg/L						
					Value	Average	Value	Average	Value	Average	Value	Average	Value	Average	Value	Average	Value	Average	Value	Average				
28/12/17	7:10	Fine	Middle	2.5	18.20	18.20	18.20	8.14	8.14	8.14	32.13	32.13	32.15	89.5	90.0	89.6	6.96	7.00	6.97	5.32	5.51	5.43	2	2.00
	7:12		Middle	2.5	18.20	18.20		8.14	8.14	8.14	32.16	32.16		89.6	89.2		89.6	6.97		6.94	6.97		5.41	
30/12/17	21:55	Cloudy	Middle	3.0	20.40	20.40	20.40	8.30	8.30	8.30	32.63	32.63	32.63	92.0	92.3	91.9	7.11	7.13	7.10	3.24	3.21	3.20	7	6.00
	21:56		Middle	3.0	20.40	20.40		8.30	8.30	8.30	32.63	32.63		92.1	91.0		91.9	7.12		7.04	7.10		3.19	
4/1/18	3:53	Cloudy	Middle	2.5	18.50	18.50	18.50	8.09	8.09	8.09	32.27	32.27	32.27	92.7	93.8	93.3	7.16	7.25	7.21	6.01	6.00	5.99	4	4.50
	3:54		Middle	2.5	18.50	18.50		8.09	8.09	8.09	32.27	32.27		93.6	93.0		93.3	7.23		7.19	7.21		5.98	
6/1/18	1:25	Cloudy	Middle	3.0	18.20	18.20	18.20	8.13	8.13	8.13	32.19	32.19	32.19	87.8	87.9	88.0	6.80	6.81	6.82	5.28	5.27	5.21	3	2.50
	1:26		Middle	3.0	18.20	18.20		8.13	8.13	8.13	32.19	32.19		88.3	88.1		88.0	6.84		6.83	6.82		5.20	
8/1/18	4:12	Cloudy	Middle	3.0	18.30	18.30	18.30	8.11	8.11	8.11	32.16	32.16	32.16	88.3	88.8	89.3	6.86	6.90	6.94	3.78	3.76	3.81	5	4.50
	4:13		Middle	3.0	18.30	18.30		8.11	8.11	8.11	32.16	32.16		89.9	90.1		89.3	6.99		7.00	6.94		3.84	
10/1/18	18:53	Cloudy	Middle	3.0	15.80	15.80	15.80	7.97	7.97	7.97	31.94	31.94	31.94	87.3	86.0	86.5	7.13	7.03	7.07	4.48	4.46	4.50	3	3.50
	18:54		Middle	3.0	15.80	15.80		7.97	7.97	7.97	31.94	31.94		86.2	86.4		86.5	7.04		7.06	7.07		4.51	
12/1/18	20:17	Fine	Middle	3.0	15.70	15.70	15.70	7.83	7.83	7.83	31.78	31.78	31.78	91.8	93.8	93.1	7.97	8.15	8.09	4.10	4.13	4.16	2	2.50
	20:18		Middle	3.0	15.70	15.70		7.83	7.83	7.83	31.78	31.78		93.6	93.2		93.1	8.13		8.09	8.09		4.17	
15/1/18	2:29	Fine	Middle	3.0	16.30	16.30	16.30	8.13	8.13	8.13	32.18	32.18	32.18	92.1	92.5	92.5	7.42	7.46	7.46	2.99	2.94	2.94	3	3.00
	2:30		Middle	3.0	16.30	16.30		8.13	8.13	8.13	32.18	32.18		92.9	92.5		92.5	7.49		7.46	7.46		2.92	
18/1/18	2:55	Fine	Middle	3.0	17.00	16.90	16.93	8.11	8.11	8.11	32.07	32.07	32.07	87.5	87.9	88.1	6.97	7.00	7.02	3.92	3.78	3.78	3	3.00
	2:56		Middle	3.0	16.90	16.90		8.11	8.11	8.11	32.07	32.07		88.6	88.5		88.1	7.06		7.05	7.02		3.72	
20/1/18	23:45	Cloudy	Middle	3.0	18.40	18.40	18.40	8.07	8.07	8.07	32.02	32.02	32.02	84.1	84.8	84.1	6.29	6.34	6.29	5.29	5.11	5.46	3	3.00
	23:46		Middle	3.0	18.40	18.40		8.07	8.07	8.07	32.02	32.02		84.2	83.3		84.1	6.30		6.23	6.29		5.62	
23/1/18	3:55	Cloudy	Middle	3.0	18.00	18.00	18.00	8.18	8.18	8.18	31.83	31.83	31.83	84.2	84.6	84.3	6.59	6.62	6.59	3.55	4.15	4.08	5	5.50
	3:56		Middle	3.0	18.00	18.00		8.18	8.18	8.18	31.83	31.83		83.7	84.6		84.3	6.52		6.61	6.59		4.40	
25/1/18	4:07	Cloudy	Middle	3.0	16.90	16.90	16.90	8.26	8.26	8.26	31.99	31.98	31.99	88.7	89.6	89.2	7.07	7.14	7.11	2.99	2.95	2.76	6	6.00
	4:08		Middle	3.0	16.90	16.90		8.26	8.26	8.26	31.99	31.99		89.6	89.0		89.2	7.13		7.09	7.11		2.86	

Remarks:  
Single underline denotes exceedance over Action Level.  
Double underline denotes exceedance over Limit Level.



**Water Monitoring Result at P1 - HKCEC Phase I  
Mid-Ebb Tide**

Date	Time	Weater Condition	Sampling Depth		Water Temperature			pH			Salinity			DO Saturation			DO			Turbidity			Suspended Solids	
					°C			-			ppt			%			mg/L			NTU			mg/L	
					Value	Average		Value	Average		Value	Average		Value	Average		Value	Average		Value	Average		Value	Average
28/12/17	6:50	Fine	Middle	2.5	18.40	18.40	18.45	8.15	8.15	8.16	32.28	32.28	32.28	90.3	90.8	90.5	6.99	7.02	7.00	7.26	7.27	7.19	4	4.00
	6:52		Middle	2.5	18.50	18.50		8.16	8.16		32.27	32.27		90.4	90.5		6.99	7.00		7.15	7.09		4	
30/12/17	21:30	Cloudy	Middle	3.0	20.30	20.30	20.30	8.29	8.29	8.29	32.60	32.60	32.60	85.1	87.1	87.0	6.59	6.75	6.74	2.67	2.55	2.53	4	3.50
	21:31		Middle	3.0	20.30	20.30		8.29	8.29		32.60	32.60		88.5	87.3		6.85	6.77		2.47	2.44		3	
4/1/18	3:25	Cloudy	Middle	2.5	18.50	18.50	18.50	8.22	8.22	8.22	32.36	32.36	32.36	92.0	91.6	92.0	7.11	7.08	7.11	6.46	6.47	6.31	4	6.00
	3:26		Middle	2.5	18.50	18.50		8.22	8.22		32.36	32.36		92.1	92.4		7.12	7.13		6.11	6.21		8	
6/1/18	0:57	Cloudy	Middle	3.0	18.20	18.20	18.20	8.25	8.25	8.25	32.32	32.32	32.32	90.4	90.9	90.8	7.01	7.05	7.04	6.27	6.25	6.23	3	3.00
	0:58		Middle	3.0	18.20	18.20		8.25	8.25		32.32	32.32		91.2	90.8		7.07	7.04		6.23	6.16		3	
8/1/18	3:45	Cloudy	Middle	3.0	18.20	18.20	18.20	8.17	8.17	8.17	32.17	32.17	32.17	91.3	90.5	90.9	7.10	7.03	7.07	3.70	3.72	3.66	4	4.00
	3:46		Middle	3.0	18.20	18.20		8.17	8.17		32.17	32.17		91.2	90.5		7.09	7.04		3.62	3.60		4	
10/1/18	18:31	Cloudy	Middle	3.0	15.50	15.50	15.50	7.99	7.99	7.99	31.90	31.90	31.90	91.3	90.4	90.6	7.51	7.44	7.45	3.08	3.16	3.15	4	4.50
	18:32		Middle	3.0	15.50	15.50		7.99	7.99		31.90	31.90		90.3	90.2		7.43	7.42		3.17	3.19		5	
12/1/18	19:49	Fine	Middle	3.0	15.60	15.60	15.60	7.95	7.95	7.95	32.06	32.06	32.06	93.5	94.4	93.7	7.96	8.04	7.99	3.89	3.86	3.85	3	3.00
	19:50		Middle	3.0	15.60	15.60		7.95	7.95		32.06	32.06		93.3	93.7		7.95	7.99		3.85	3.79		3	
15/1/18	2:00	Fine	Middle	3.0	16.00	16.00	16.00	8.21	8.21	8.21	32.18	32.18	32.18	93.6	92.9	93.4	7.60	7.54	7.58	3.07	3.05	3.08	<2	2.00
	2:01		Middle	3.0	16.00	16.00		8.21	8.21		32.18	32.18		93.8	93.3		7.61	7.57		3.09	3.11		2	
18/1/18	2:30	Fine	Middle	3.0	16.90	16.90	16.90	8.11	8.11	8.11	32.09	32.09	32.09	86.7	86.7	86.9	6.92	6.92	6.94	3.87	3.78	3.89	3	3.50
	2:31		Middle	3.0	16.90	16.90		8.11	8.11		32.09	32.09		87.0	87.2		6.94	6.96		3.92	3.99		4	
20/1/18	23:20	Cloudy	Middle	3.0	18.80	18.80	18.80	8.06	8.06	8.06	32.02	32.02	32.02	85.6	84.6	84.5	6.24	6.18	6.17	5.79	5.88	5.92	4	4.50
	23:21		Middle	3.0	18.80	18.80		8.06	8.06		32.02	32.02		84.3	83.6		6.15	6.10		5.97	6.03		5	
23/1/18	3:35	Cloudy	Middle	3.0	18.00	18.00	18.00	8.19	8.19	8.19	31.80	31.80	31.80	82.6	82.9	83.4	6.46	6.49	6.52	2.55	2.32	2.43	6	5.50
	3:36		Middle	3.0	18.00	18.00		8.19	8.19		31.80	31.80		84.3	83.8		6.59	6.54		2.49	2.37		5	
25/1/18	3:43	Cloudy	Middle	3.0	16.70	16.70	16.70	8.27	8.27	8.27	32.14	32.14	32.14	84.5	85.4	86.2	6.76	6.84	6.86	3.48	3.21	3.31	5	8.00
	3:44		Middle	3.0	16.70	16.70		8.27	8.27		32.14	32.14		87.3	87.6		6.98	7.01		3.37	3.19		11	

Remarks:  
Single underline denotes exceedance over Action Level.  
Double underline denotes exceedance over Limit Level.



**Water Monitoring Result at P3 - APA  
Mid-Ebb Tide**

Date	Time	Weather Condition	Sampling Depth		Water Temperature			pH			Salinity			DO Saturation		DO		Turbidity		Suspended Solids				
					°C		-		ppt		%		mg/L		NTU		mg/L							
					Value	Average	Value	Average	Value	Average	Value	Average	Value	Average	Value	Average	Value	Average	Value	Average				
28/12/17	6:55	Fine	Middle	2.5	18.10	18.10	18.10	8.16	8.16	8.16	32.15	32.15	32.15	90.6	90.9	90.7	7.06	7.09	7.07	6.68	6.71	6.75	3	3.50
	6:57		Middle	2.5	18.10	18.10		8.16	8.16	8.16	32.15	32.15		32.15	90.5		90.6	90.6		7.05	7.06		7.06	
30/12/17	21:37	Cloudy	Middle	3.0	20.30	20.30	20.30	8.27	8.27	8.27	32.62	32.62	32.62	83.3	86.0	85.4	6.45	6.65	6.58	2.08	2.21	2.23	4	3.50
	21:38		Middle	3.0	20.30	20.30		8.27	8.27	8.27	32.62	32.62		32.62	86.7		85.5	85.5		6.71	6.52		6.52	
4/1/18	3:31	Cloudy	Middle	2.5	18.40	18.40	18.40	8.24	8.24	8.24	32.36	32.36	32.36	85.6	86.7	86.9	6.62	6.70	6.72	4.93	4.91	4.91	5	5.50
	3:32		Middle	2.5	18.40	18.40		8.24	8.24	8.24	32.36	32.36		32.36	88.3		86.8	86.8		6.83	6.71		6.71	
6/1/18	1:07	Cloudy	Middle	3.0	18.30	18.30	18.30	8.19	8.19	8.19	32.30	32.30	32.30	87.1	87.4	87.5	6.73	6.73	6.76	5.35	5.30	5.29	3	3.00
	1:08		Middle	3.0	18.30	18.30		8.19	8.19	8.19	32.30	32.30		32.30	88.0		87.6	87.6		6.80	6.77		6.77	
8/1/18	3:51	Cloudy	Middle	3.0	18.20	18.20	18.20	8.14	8.14	8.14	32.15	32.15	32.15	91.6	91.8	92.3	7.13	7.15	7.18	3.91	3.88	3.94	4	4.00
	3:52		Middle	3.0	18.20	18.20		8.14	8.14	8.14	32.15	32.15		32.15	93.2		92.4	92.4		7.25	7.18		7.18	
10/1/18	18:37	Cloudy	Middle	3.0	15.30	15.30	15.30	8.00	8.00	8.00	31.92	31.92	31.92	88.7	89.9	89.4	7.33	7.43	7.40	3.27	3.20	3.23	3	4.00
	18:38		Middle	3.0	15.30	15.30		8.00	8.00	8.00	31.92	31.92		31.92	89.9		89.2	89.2		7.43	7.42		7.42	
12/1/18	19:55	Fine	Middle	3.0	15.90	15.90	15.90	8.02	8.02	8.02	32.09	32.09	32.09	90.3	90.1	90.2	7.81	7.80	7.81	4.26	4.08	4.12	3	3.00
	19:56		Middle	3.0	15.90	15.90		8.02	8.02	8.02	32.09	32.09		32.09	90.5		90.0	90.0		7.83	7.78		7.78	
15/1/18	2:09	Fine	Middle	3.0	16.10	16.10	16.10	8.18	8.18	8.19	32.18	32.18	32.19	93.8	93.8	93.6	7.60	7.60	7.59	2.90	2.88	2.87	3	2.50
	2:10		Middle	3.0	16.10	16.10		8.19	8.19	8.19	32.20	32.18		32.18	93.6		93.1	93.1		7.59	7.55		7.55	
18/1/18	2:37	Fine	Middle	3.0	16.90	16.90	16.90	8.11	8.11	8.11	32.07	32.07	32.07	85.0	84.8	85.8	6.77	6.76	6.84	4.58	4.37	4.45	3	3.00
	2:38		Middle	3.0	16.90	16.90		8.11	8.11	8.11	32.07	32.07		32.07	86.6		86.7	86.7		6.90	6.91		6.91	
20/1/18	23:25	Cloudy	Middle	3.0	18.30	18.30	18.30	8.07	8.07	8.07	32.03	32.03	32.03	81.7	82.2	82.3	6.11	6.14	6.15	6.01	6.09	6.03	4	4.00
	23:26		Middle	3.0	18.30	18.30		8.07	8.07	8.07	32.03	32.03		32.03	83.3		81.8	81.8		6.24	6.12		6.12	
23/1/18	3:39	Cloudy	Middle	3.0	18.00	18.00	18.00	8.19	8.19	8.19	31.80	31.80	31.80	84.2	83.8	84.9	6.58	6.55	6.63	3.57	3.37	3.36	5	7.00
	3:40		Middle	3.0	18.00	18.00		8.19	8.19	8.19	31.80	31.80		31.80	85.6		85.8	85.8		6.69	6.70		6.70	
25/1/18	3:48	Cloudy	Middle	3.0	16.70	16.70	16.73	8.27	8.27	8.27	32.17	32.17	32.17	88.3	88.6	88.5	7.06	7.09	7.07	2.55	2.41	2.51	4	5.00
	3:49		Middle	3.0	16.80	16.70		8.27	8.27	8.27	32.17	32.17		32.17	88.7		88.2	88.2		7.09	7.05		7.05	

Remarks:  
Single underline denotes exceedance over Action Level.  
Double underline denotes exceedance over Limit Level.



**Water Monitoring Result at P4 - SOC  
Mid-Ebb Tide**

Date	Time	Weather Condition	Sampling Depth		Water Temperature			pH			Salinity			DO Saturation		DO		Turbidity		Suspended Solids				
					°C		-		ppt		%		mg/L		NTU		mg/L							
					Value	Average	Value	Average	Value	Average	Value	Average	Value	Average	Value	Average	Value	Average	Value	Average				
28/12/17	7:00	Fine	Middle	2.5	18.10	18.10	18.15	8.16	8.16	8.16	32.14	32.14	32.15	89.8	90.2	89.8	6.99	7.03	6.99	6.62	6.79	6.79	3	2.50
	7:02		Middle	2.5	18.20	18.20		8.15	8.15		32.16	32.16		89.6	89.4		6.98	6.96		6.85	6.88		2	
30/12/17	21:43	Cloudy	Middle	3.0	20.40	20.40	20.40	8.24	8.24	8.24	32.61	32.61	32.61	92.1	91.7	91.4	7.12	7.09	7.07	3.47	3.45	3.47	12	13.00
	21:44		Middle	3.0	20.40	20.40		8.24	8.24		32.61	32.61		91.2	90.5		7.06	7.00		3.43	3.52		14	
4/1/18	3:39	Cloudy	Middle	2.5	18.50	18.50	18.50	8.23	8.23	8.23	32.23	32.23	32.23	91.2	92.9	91.6	7.05	7.19	7.09	5.97	5.94	5.93	7	6.00
	3:40		Middle	2.5	18.50	18.50		8.23	8.23		32.23	32.23		91.8	90.6		7.10	7.00		5.87	5.7		5	
6/1/18	1:12	Cloudy	Middle	3.0	18.40	18.40	18.40	8.23	8.23	8.23	32.23	32.23	32.23	86.1	86.0	86.2	6.67	6.66	6.68	5.61	5.69	5.67	3	3.00
	1:13		Middle	3.0	18.40	18.40		8.23	8.23		32.23	32.23		86.4	86.1		6.70	6.67		5.68	5.70		3	
8/1/18	3:57	Cloudy	Middle	3.0	18.30	18.30	18.30	8.18	8.18	8.18	32.17	32.17	32.17	90.1	90.4	90.7	7.00	7.02	7.04	3.73	3.65	3.65	8	7.00
	3:58		Middle	3.0	18.30	18.30		8.18	8.18		32.17	32.17		90.7	91.6		7.04	7.11		3.62	3.58		6	
10/1/18	18:41	Cloudy	Middle	3.0	15.40	15.40	15.40	8.01	8.01	8.01	31.92	31.92	31.92	89.7	89.4	90.3	7.43	7.40	7.48	3.48	3.45	3.39	7	8.00
	18:42		Middle	3.0	15.40	15.40		8.01	8.01		31.92	31.92		91.6	90.6		7.58	7.50		3.34	3.29		9	
12/1/18	20:07	Fine	Middle	3.0	15.50	15.50	15.50	8.05	8.05	8.05	32.09	32.09	32.09	89.6	89.9	90.7	7.81	7.84	7.91	4.04	4.02	4.01	3	3.50
	20:08		Middle	3.0	15.50	15.50		8.05	8.05		32.09	32.09		91.9	91.5		8.01	7.98		4.00	3.98		4	
15/1/18	2:17	Fine	Middle	3.0	16.10	16.10	16.10	8.20	8.20	8.20	32.18	32.18	32.18	90.3	90.0	90.2	7.32	7.30	7.31	2.43	2.67	2.60	<2	3.00
	2:18		Middle	3.0	16.10	16.10		8.20	8.20		32.18	32.18		90.3	90.1		7.32	7.30		2.63	2.65		3	
18/1/18	2:45	Fine	Middle	3.0	16.90	16.90	16.90	8.11	8.11	8.11	32.09	32.09	32.09	83.1	83.4	86.0	6.62	6.65	6.65	3.48	3.46	3.45	3	3.00
	2:46		Middle	3.0	16.90	16.90		8.11	8.11		32.09	32.09		83.9	93.4		6.68	6.65		3.44	3.42		3	
20/1/18	23:32	Cloudy	Middle	3.0	18.00	18.00	18.00	8.09	8.09	8.09	32.02	32.02	32.02	83.0	82.3	82.7	6.24	6.20	6.23	5.21	5.10	5.10	4	4.00
	23:33		Middle	3.0	18.00	18.00		8.09	8.09		32.02	32.02		83.0	82.5		6.25	6.21		5.08	5.02		4	
23/1/18	3:47	Cloudy	Middle	3.0	18.00	18.00	18.00	8.19	8.19	8.19	31.81	31.81	31.81	83.1	83.3	84.0	6.50	6.51	6.56	1.38	1.46	1.43	7	7.50
	3:48		Middle	3.0	18.00	18.00		8.19	8.19		31.81	31.81		84.7	84.7		6.62	6.62		1.30	1.58		8	
25/1/18	3:52	Cloudy	Middle	3.0	16.70	16.70	16.70	8.27	8.27	8.27	32.21	32.21	32.21	85.4	86.7	86.8	6.82	6.93	6.93	3.04	2.77	2.82	5	6.50
	3:53		Middle	3.0	16.70	16.70		8.27	8.27		32.21	32.21		87.8	87.2		7.01	6.95		2.47	2.98		8	

Remarks:  
Single underline denotes exceedance over Action Level.  
Double underline denotes exceedance over Limit Level.



**Water Monitoring Result at P5 - WCT / RT / IT  
Mid-Ebb Tide**

Date	Time	Weather Condition	Sampling Depth		Water Temperature			pH			Salinity			DO Saturation		DO		Turbidity		Suspended Solids				
					°C			-			ppt			%		mg/L		NTU		mg/L				
					Value	Average		Value	Average		Value	Average		Value	Average		Value	Average	Value	Average	Value	Average	Value	Average
28/12/17	7:05	Fine	Middle	2.5	18.20	18.20	18.20	8.15	8.15	8.15	32.10	32.10	32.14	87.6	87.5	86.8	6.81	6.81	6.77	5.67	5.65	5.65	<2	<2
	7:07		Middle	2.5	18.20	18.20		8.14	8.14	8.14	32.18	32.18		85.7	86.3		6.75	6.71		5.64	5.64			
30/12/17	21:50	Cloudy	Middle	3.0	20.30	20.30	20.30	8.08	8.08	8.08	32.40	32.40	32.40	89.0	89.8	89.7	6.90	6.96	6.96	3.10	3.08	3.06	6	5.50
	21:51		Middle	3.0	20.30	20.30		8.08	8.08	8.08	32.40	32.40		89.9	90.2		6.99	6.98		3.05	3.02		5	
4/1/18	3:47	Cloudy	Middle	2.5	18.50	18.50	18.50	8.19	8.19	8.19	32.52	32.35	32.39	91.4	91.5	91.4	7.06	7.07	7.07	6.25	6.20	6.24	6	6.50
	3:48		Middle	2.5	18.50	18.50		8.19	8.19	8.19	32.35	32.35		91.1	91.7		7.05	7.08		6.27	6.25		7	
6/1/18	1:19	Cloudy	Middle	3.0	18.40	18.40	18.40	8.22	8.22	8.22	32.32	32.32	32.32	89.4	89.5	89.1	6.91	6.92	6.88	4.74	4.60	4.61	2	2.50
	1:20		Middle	3.0	18.40	18.40		8.22	8.22	8.22	32.32	32.32		89.2	88.2		6.89	6.81		4.58	4.52		3	
8/1/18	4:05	Cloudy	Middle	3.0	18.30	18.30	18.30	8.19	8.19	8.19	32.14	32.14	32.14	90.1	89.5	90.2	7.00	6.95	7.01	3.20	3.14	3.14	4	3.50
	4:06		Middle	3.0	18.30	18.30		8.19	8.19	8.19	32.14	32.14		90.7	90.5		7.05	7.03		3.11	3.09		3	
10/1/18	18:45	Cloudy	Middle	3.0	15.40	15.40	15.40	8.04	8.04	8.04	31.92	31.92	31.92	90.4	90.7	90.6	7.44	7.47	7.46	3.25	3.24	3.32	5	4.00
	18:46		Middle	3.0	15.40	15.40		8.04	8.04	8.04	31.92	31.92		90.5	90.6		7.45	7.46		3.38	3.40		3	
12/1/18	20:13	Fine	Middle	3.0	15.40	15.40	15.40	8.07	8.07	8.07	32.06	32.06	32.06	89.1	88.1	88.9	7.77	7.69	7.76	4.28	4.09	4.14	2	2.00
	20:14		Middle	3.0	15.40	15.40		8.07	8.07	8.07	32.06	32.06		88.6	89.9		7.73	7.83		4.11	4.06		<2	
15/1/18	2:23	Fine	Middle	3.0	16.10	16.10	16.10	8.17	8.17	8.17	32.18	32.18	32.18	92.4	92.7	93.1	7.48	7.51	7.54	2.82	2.80	2.80	3	3.00
	2:24		Middle	3.0	16.10	16.10		8.17	8.17	8.17	32.18	32.18		93.6	93.6		7.58	7.58		2.79	2.77		3	
18/1/18	2:51	Fine	Middle	3.0	16.90	16.90	16.90	8.11	8.11	8.11	32.09	32.09	32.09	86.1	87.1	87.0	6.87	6.95	6.94	4.03	3.79	3.85	4	4.00
	2:52		Middle	3.0	16.90	16.90		8.11	8.11	8.11	32.09	32.09		87.7	87.2		6.99	6.95		3.81	3.77		4	
20/1/18	23:39	Cloudy	Middle	3.0	18.60	18.60	18.60	8.07	8.07	8.07	32.02	32.03	32.03	82.4	81.9	81.7	6.14	6.11	6.09	5.01	5.19	5.20	4	4.00
	23:40		Middle	3.0	18.60	18.60		8.07	8.07	8.07	32.03	32.03		81.5	81.0		6.07	6.02		5.24	5.34		4	
23/1/18	3:51	Cloudy	Middle	3.0	17.90	17.90	17.90	8.19	8.19	8.19	31.80	31.80	31.80	81.4	84.7	83.5	6.37	6.63	6.54	2.79	2.03	2.23	9	7.00
	3:52		Middle	3.0	17.90	17.90		8.19	8.19	8.19	31.80	31.80		84.4	83.6		6.60	6.54		2.06	2.02		5	
25/1/18	3:57	Cloudy	Middle	3.0	16.80	16.80	16.80	8.27	8.27	8.27	32.00	32.00	32.00	84.1	86.1	87.0	6.73	6.88	6.95	3.88	3.51	3.50	4	5.00
	3:58		Middle	3.0	16.80	16.80		8.27	8.27	8.27	32.00	32.00		89.0	88.7		7.11	7.09		3.21	3.40		6	

Remarks:  
Single underline denotes exceedance over Action Level.  
Double underline denotes exceedance over Limit Level.



**Water Monitoring Result at RW21-P789 - GEC / CRB / SHK  
Mid-Ebb Tide**

Date	Time	Weather Condition	Sampling Depth		Water Temperature		pH			Salinity		DO Saturation		DO		Turbidity		Suspended Solids						
					°C		-		ppt		%		mg/L		NTU		mg/L							
			m	Value	Average	Value	Average	Value	Average	Value	Average	Value	Average	Value	Average	Value	Average	Value	Average					
28/12/17	7:30	Fine	Middle	3.5	18.40	18.40	18.40	8.13	8.13	8.14	32.12	32.12	32.12	89.4	89.6	89.3	6.93	6.94	6.92	6.88	6.85	6.87	3	3.50
	7:32		Middle	3.5	18.40	18.40		8.14	8.14		32.11	32.11		89.3	88.8		6.92	6.89		6.88	6.85		4	
30/12/17	22:10	Cloudy	Middle	4.0	20.00	20.00	20.00	8.19	8.19	8.19	32.71	32.71	32.71	92.4	91.7	92.6	7.20	7.14	7.21	1.94	1.88	1.88	16	9.50
	22:11		Middle	4.0	20.00	20.00		8.19	8.20		32.71	32.71		93.4	92.8		7.27	7.22		1.84	1.85		3	
4/1/18	4:10	Cloudy	Middle	3.5	18.50	18.50	18.50	8.20	8.20	8.20	32.28	32.28	32.28	89.6	91.6	90.4	6.92	7.08	6.98	4.25	4.21	4.26	12	10.50
	4:11		Middle	3.5	18.50	18.50		8.20	8.20		32.28	32.28		88.9	91.4		6.87	7.06		4.22	4.35		9	
6/1/18	1:40	Cloudy	Middle	4.0	18.90	18.90	18.90	8.02	8.03	8.03	32.20	32.20	32.20	89.6	91.9	91.1	7.00	7.19	7.12	4.48	4.51	4.47	2	2.50
	1:41		Middle	4.0	18.90	18.90		8.03	8.03		32.20	32.20		91.3	91.5		7.13	7.15		4.46	4.42		3	
8/1/18	3:33	Cloudy	Middle	4.0	18.40	18.40	18.40	8.02	8.02	8.02	30.96	30.96	30.96	86.9	86.5	86.9	6.78	6.75	6.78	3.17	3.15	3.14	6	5.50
	3:34		Middle	4.0	18.40	18.40		8.02	8.02		30.96	30.96		87.1	87.2		6.79	6.80		3.12	3.10		5	
10/1/18	19:06	Cloudy	Middle	4.0	16.00	16.00	16.00	7.94	7.94	7.94	31.62	31.62	31.62	88.0	89.9	89.3	7.20	7.37	7.32	2.61	2.59	2.58	2	3.50
	19:07		Middle	4.0	16.00	16.00		7.94	7.94		31.62	31.62		89.8	89.5		7.36	7.34		2.57	2.55		5	
12/1/18	20:27	Fine	Middle	4.0	15.60	15.60	15.60	8.06	8.06	8.06	32.01	32.01	32.01	93.6	93.8	93.2	7.67	7.69	7.64	2.61	2.60	2.59	3	2.50
	20:28		Middle	4.0	15.60	15.60		8.06	8.06		32.01	32.01		93.3	92.2		7.65	7.56		2.58	2.56		2	
15/1/18	2:51	Fine	Middle	4.0	16.10	16.10	16.10	7.82	7.82	7.82	29.07	29.07	29.07	86.4	87.1	87.0	7.14	7.20	7.17	5.02	5.00	4.97	4	3.50
	2:52		Middle	4.0	16.10	16.10		7.82	7.82		29.07	29.07		87.5	86.9		7.23	7.12		4.96	4.88		3	
18/1/18	3:50	Fine	Middle	4.0	16.90	16.90	16.90	8.07	8.07	8.07	31.59	31.59	31.59	88.4	88.9	89.0	7.06	7.10	7.11	2.19	2.22	2.22	3	2.50
	3:51		Middle	4.0	16.90	16.90		8.07	8.07		31.59	31.59		89.4	89.4		7.14	7.14		2.23	2.25		2	
20/1/18	23:05	Cloudy	Middle	4.0	18.00	18.00	18.00	8.07	8.07	8.07	32.05	32.05	32.05	81.2	82.8	82.8	5.91	5.99	6.02	3.21	3.11	3.11	2	3.50
	23:06		Middle	4.0	18.00	18.00		8.07	8.07		32.05	32.05		83.7	83.3		6.10	6.06		3.09	3.02		5	
23/1/18	4:10	Cloudy	Middle	4.0	17.90	17.90	17.90	8.15	8.15	8.15	31.40	31.40	31.40	84.4	85.0	84.4	6.62	6.66	6.61	1.34	1.32	1.31	4	5.00
	4:11		Middle	4.0	17.90	17.90		8.15	8.15		31.40	31.40		84.1	84.0		6.59	6.58		1.30	1.28		6	
25/1/18	4:21	Cloudy	Middle	4.0	17.00	17.00	17.00	8.22	8.22	8.22	32.10	32.10	32.10	89.7	89.9	89.8	7.14	7.16	7.15	1.90	1.93	1.88	6	6.00
	4:22		Middle	4.0	17.00	17.00		8.22	8.22		32.10	32.10		89.9	89.8		7.15	7.14		1.83	1.86		6	

Remarks:  
Single underline denotes exceedance over Action Level.  
Double underline denotes exceedance over Limit Level.



**Water Monitoring Result at WSD19 - Sheung Wan  
Mid-Ebb Tide**

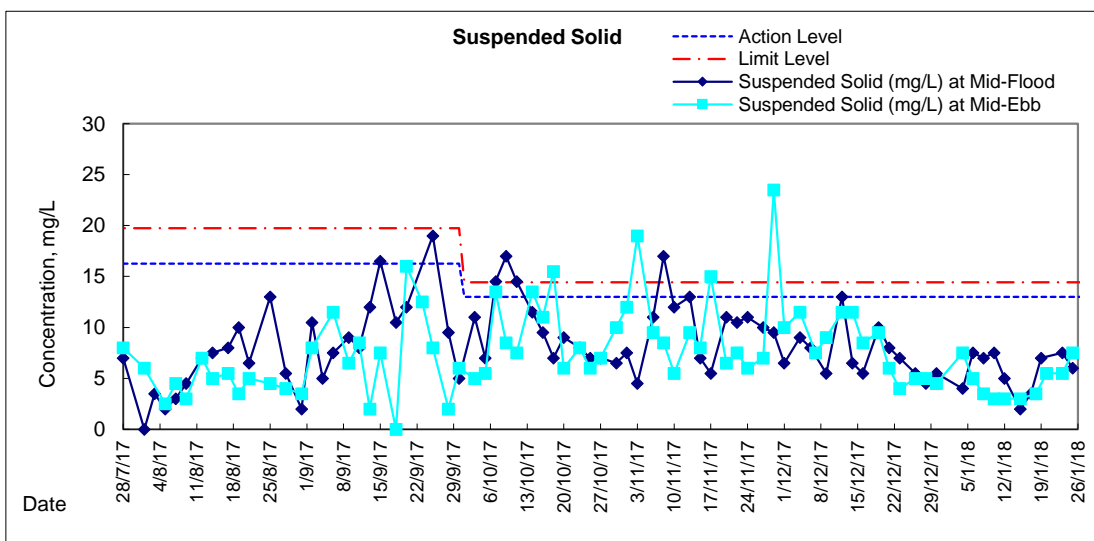
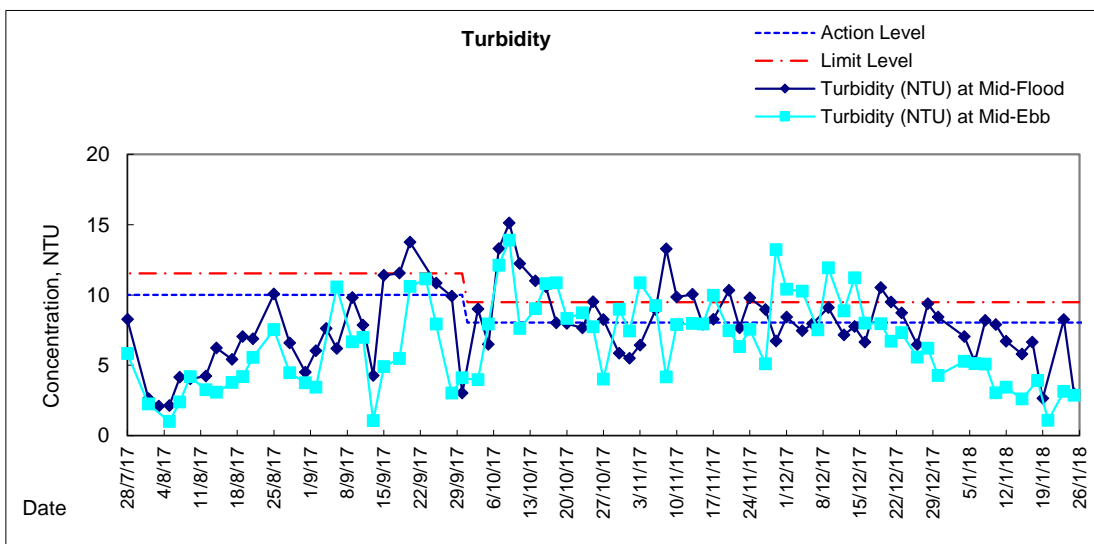
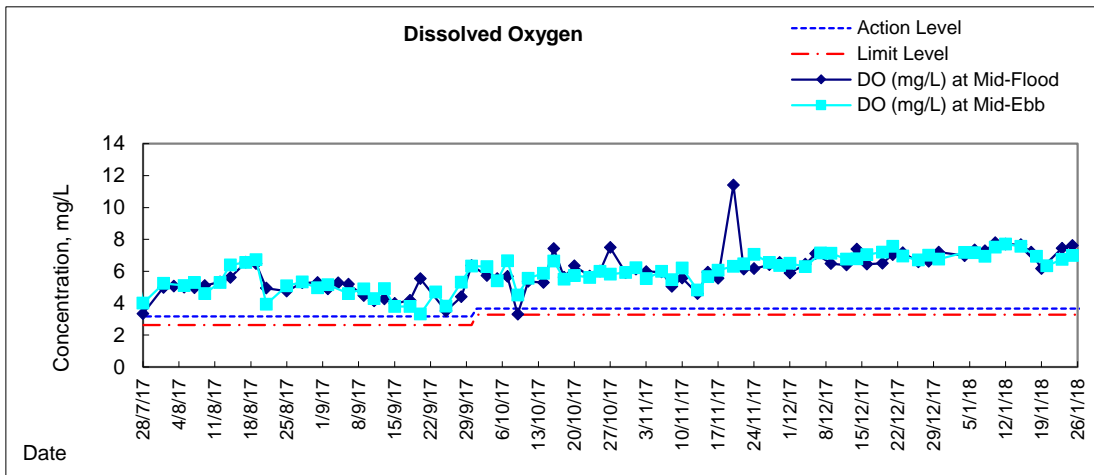
Date	Time	Weather Condition	Sampling Depth		Water Temperature			pH			Salinity			DO Saturation		DO		Turbidity		Suspended Solids				
					°C			-			ppt			%		mg/L		NTU		mg/L				
					Value	Average		Value	Average		Value	Average		Value	Average		Value	Average	Value	Average	Value	Average	Value	Average
28/12/17	8:50	Fine	Middle	3.5	18.60	18.60	18.65	8.13	8.13	8.13	32.12	32.12	32.13	90.9	91.3	90.8	7.02	7.04	7.00	6.18	6.23	6.21	5	5.00
	8:52		Middle	3.5	18.70	18.70		8.12	8.12	8.12	32.13	32.13		90.7	90.3		6.99	6.96		6.22	6.21		5	
30/12/17	20:45	Cloudy	Middle	4.0	20.10	20.10	20.10	8.02	8.02	8.02	32.86	32.86	32.86	88.8	90.6	90.8	6.62	6.75	6.77	4.24	4.22	4.28	4	4.50
	20:46		Middle	4.0	20.10	20.10		8.02	8.02	8.02	32.86	32.86		92.3	91.4		6.89	6.80		4.36	4.29		5	
4/1/18	1:15	Cloudy	Middle	4.0	18.70	18.70	18.70	8.01	8.01	8.01	31.46	31.46	31.46	91.8	92.7	92.9	7.10	7.16	7.18	5.25	5.23	5.28	7	7.50
	1:16		Middle	4.0	18.70	18.70		8.00	8.00	8.00	31.46	31.46		93.4	93.5		7.22	7.23		5.35	5.28		8	
6/1/18	0:43	Cloudy	Middle	4.0	18.50	18.50	18.50	8.01	8.01	8.01	32.32	32.32	32.32	94.2	93.5	92.9	7.27	7.21	7.17	5.22	5.18	5.11	5	5.00
	0:44		Middle	4.0	18.50	18.50		8.01	8.01	8.01	32.32	32.32		92.5	91.5		7.14	7.06		5.03	5.02		5	
8/1/18	4:28	Cloudy	Middle	4.0	18.50	18.50	18.50	7.96	7.96	7.96	32.11	32.11	32.11	88.7	89.2	89.5	6.87	6.91	6.93	5.10	5.00	5.09	3	3.50
	4:29		Middle	4.0	18.50	18.50		7.96	7.96	7.96	32.11	32.11		89.9	90.1		6.96	6.98		5.03	5.21		4	
10/1/18	17:45	Cloudy	Middle	4.0	15.10	15.10	15.10	7.90	7.90	7.90	31.82	31.82	31.82	89.6	90.1	90.6	7.43	7.47	7.51	2.99	3.01	3.03	3	3.00
	17:46		Middle	4.0	15.10	15.10		7.90	7.90	7.90	31.82	31.82		91.5	91.0		7.59	7.54		3.05	3.08		3	
12/1/18	19:15	Fine	Middle	4.0	15.60	15.60	15.60	8.04	8.04	8.04	31.92	31.92	31.92	95.3	93.5	93.8	7.83	7.69	7.71	3.50	3.36	3.44	3	3.00
	19:16		Middle	4.0	15.60	15.60		8.04	8.04	8.04	31.92	31.92		93.4	93.1		7.67	7.65		3.43	3.46		3	
15/1/18	23:30	Fine	Middle	4.0	16.30	16.30	16.30	8.06	8.06	8.06	32.05	32.05	32.05	93.0	94.0	93.6	7.52	7.59	7.57	2.26	2.72	2.60	3	3.00
	23:31		Middle	4.0	16.30	16.30		8.06	8.06	8.06	32.05	32.05		94.2	93.3		7.62	7.54		2.77	2.65		3	
18/1/18	0:30	Fine	Middle	4.0	17.10	17.10	17.10	8.03	8.03	8.03	31.81	31.81	31.81	87.0	87.6	87.3	6.92	6.96	6.94	4.02	3.87	3.92	4	3.50
	0:31		Middle	4.0	17.10	17.10		8.03	8.03	8.03	31.81	31.81		87.3	87.4		6.94	6.95		3.92	3.85		3	
20/1/18	2:30	Cloudy	Middle	4.0	18.60	18.60	18.60	8.07	8.07	8.07	32.12	32.12	32.12	87.6	87.8	86.7	6.42	6.43	6.35	1.07	1.05	1.08	5	5.50
	2:31		Middle	4.0	18.60	18.60		8.07	8.07	8.07	32.12	32.12		86.5	85.0		6.33	6.22		1.08	1.11		6	
23/1/18	2:45	Cloudy	Middle	4.0	18.30	18.30	18.30	8.16	8.16	8.16	31.60	31.60	31.60	86.0	86.9	86.7	6.70	6.77	6.75	3.25	3.19	3.13	6	5.50
	2:46		Middle	4.0	18.30	18.30		8.16	8.16	8.16	31.60	31.60		87.1	86.8		6.78	6.75		3.07	3.02		5	
25/1/18	2:45	Cloudy	Middle	4.0	17.10	17.10	17.10	8.24	8.24	8.24	31.85	31.85	31.85	86.2	88.1	87.8	6.86	7.01	6.99	2.91	2.93	2.86	7	7.50
	2:46		Middle	4.0	17.10	17.10		8.24	8.24	8.24	31.85	31.85		88.9	88.0		7.07	7.00		2.92	2.66		8	

Remarks:  
Single underline denotes exceedance over Action Level.  
Double underline denotes exceedance over Limit Level.



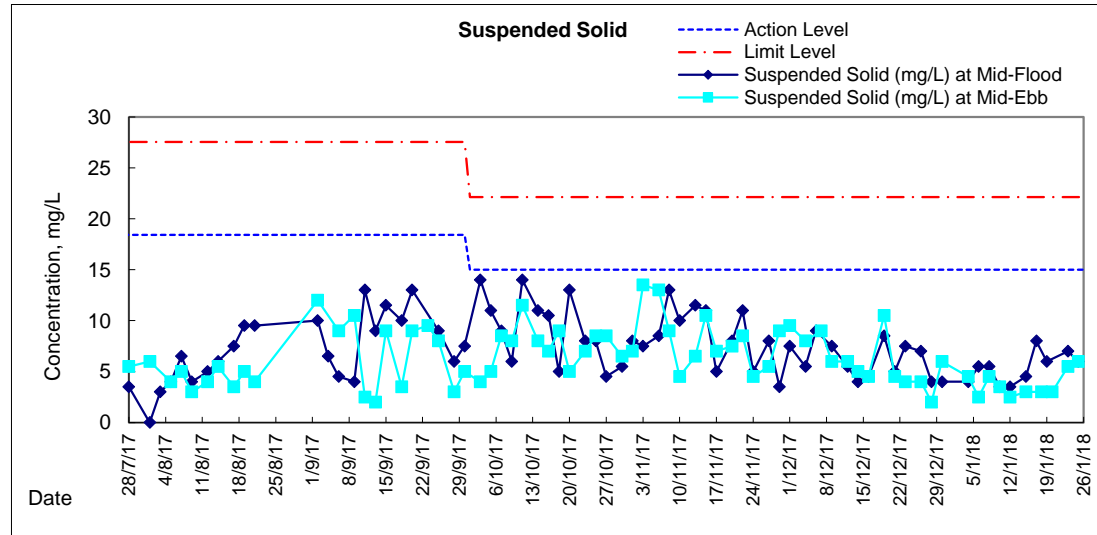
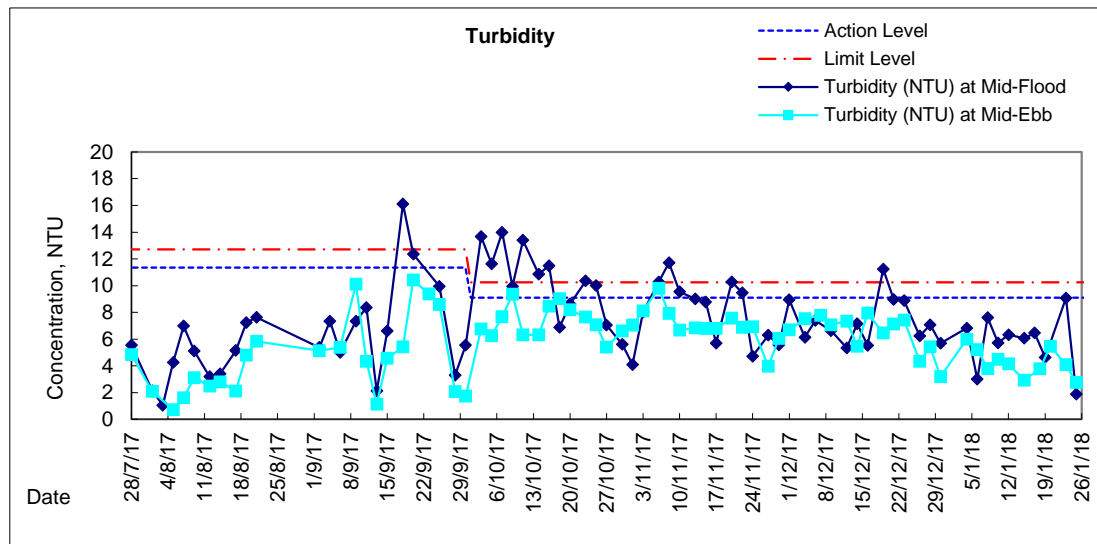
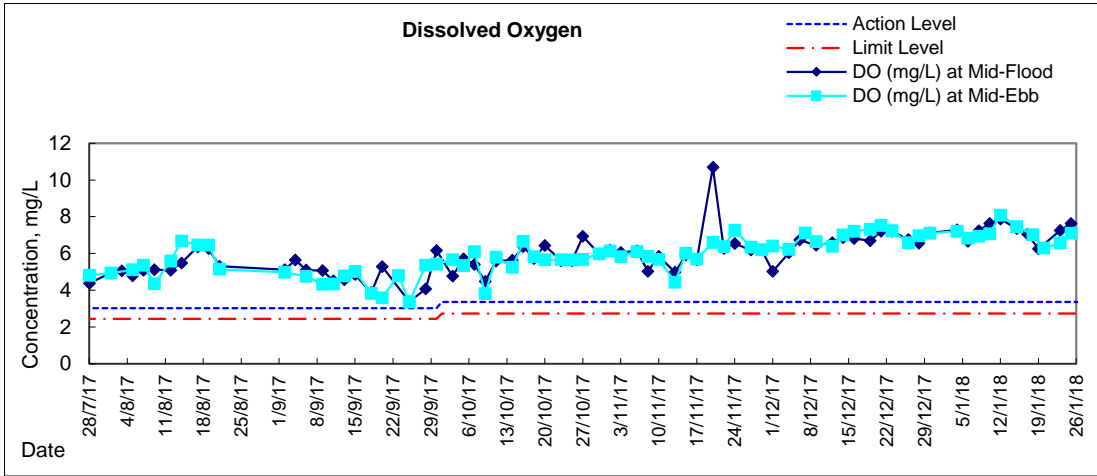


# Graphic Presentation of Water Quality Result of WSD19 - Sheung Wan



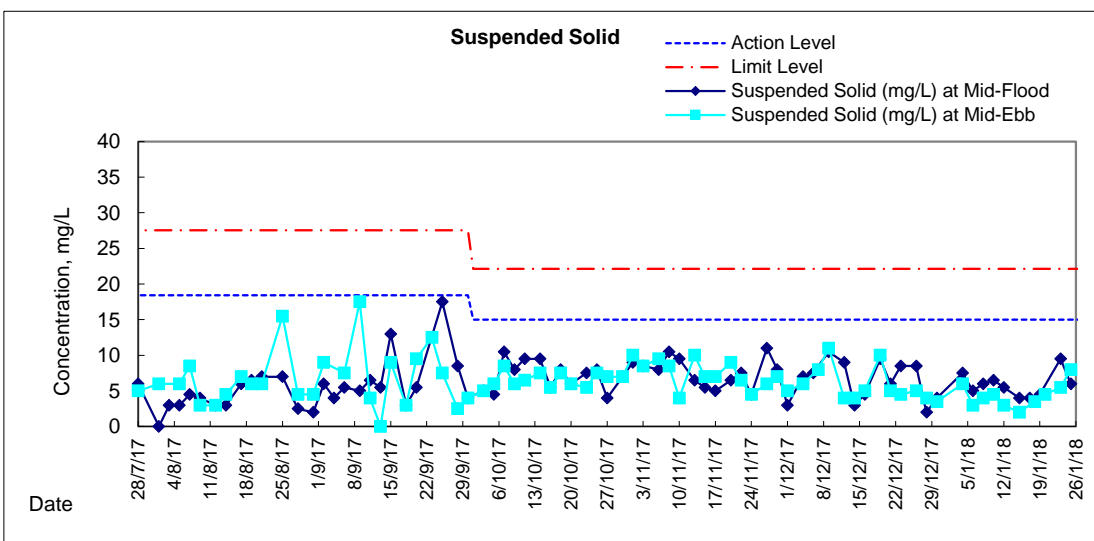
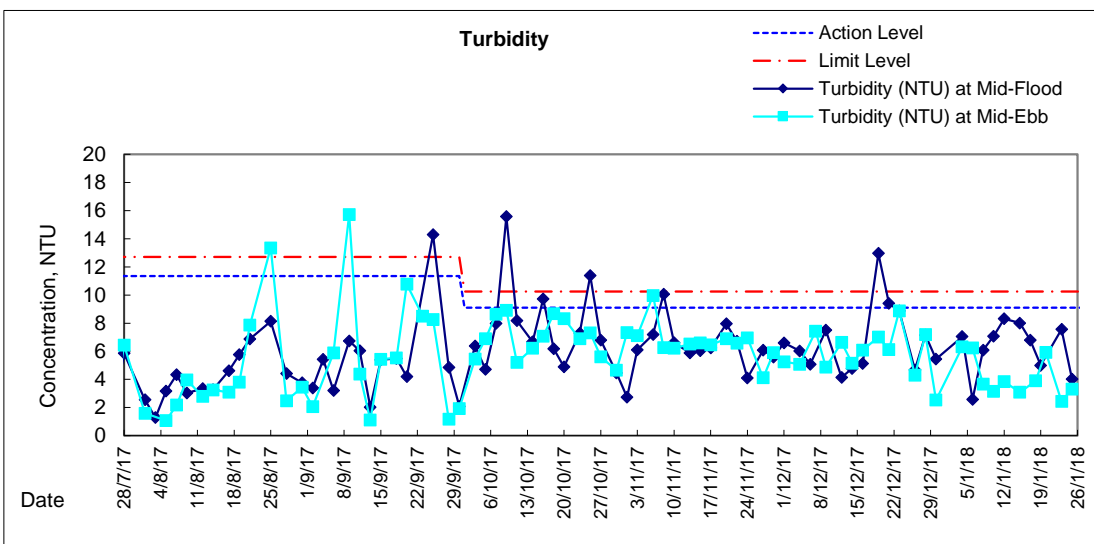
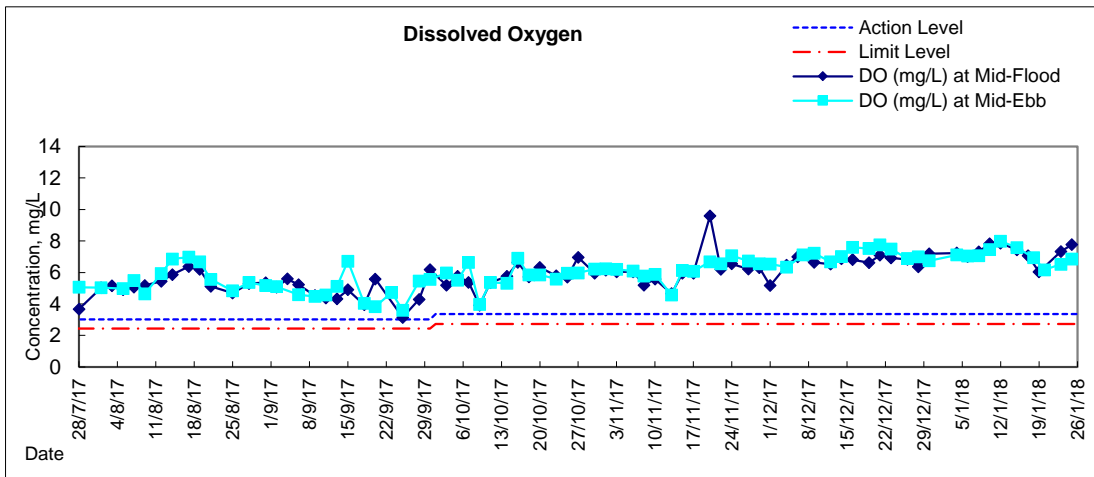


### Graphic Presentation of Water Quality Result of C1 - HKCEC



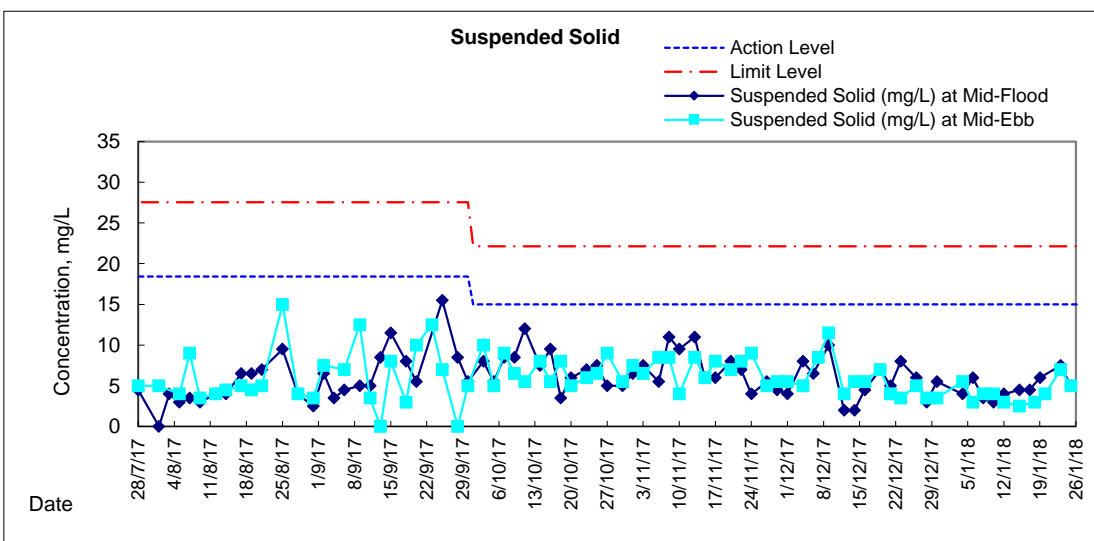
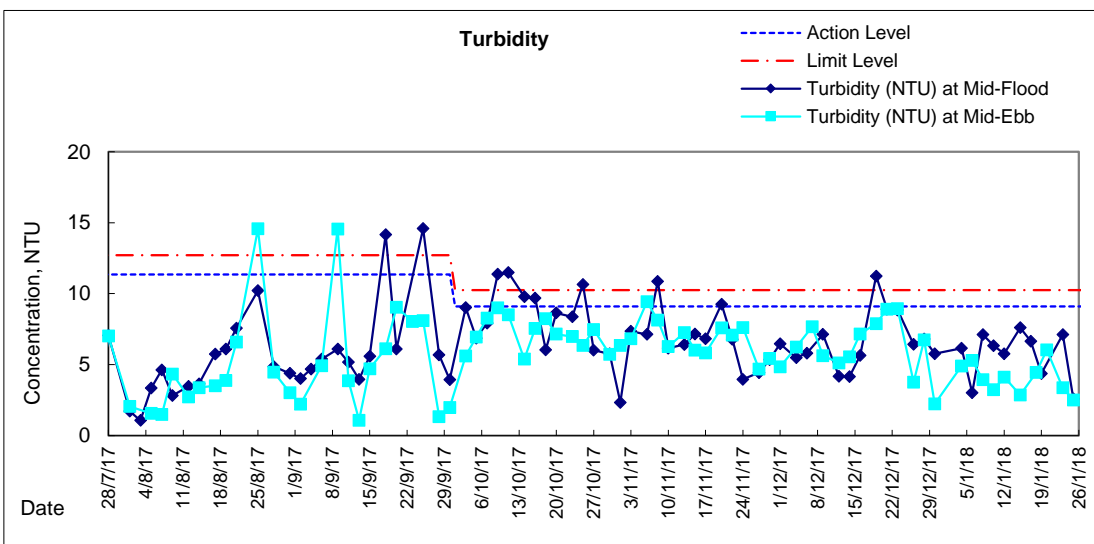
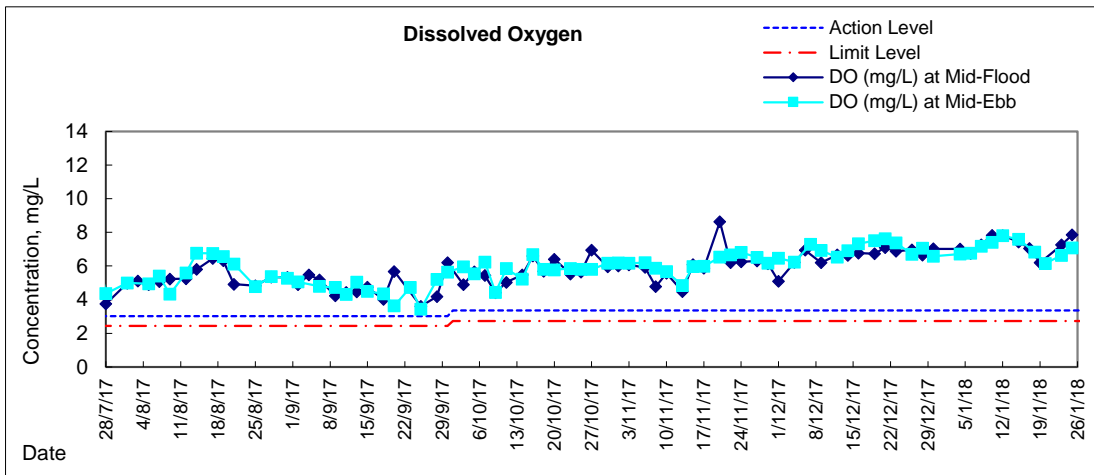


# Graphic Presentation of Water Quality Result of P1 - HKCEC Phase I



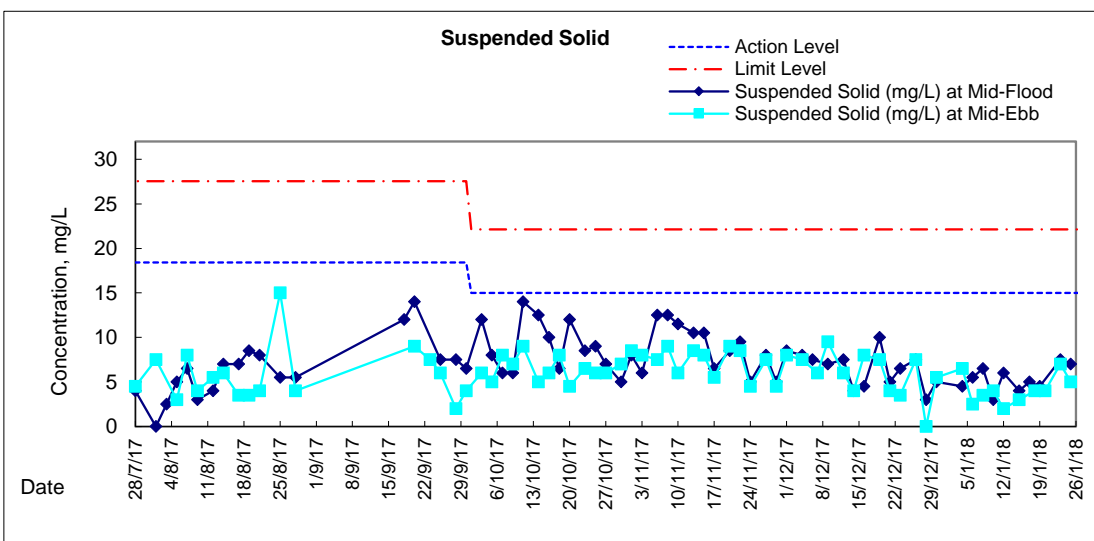
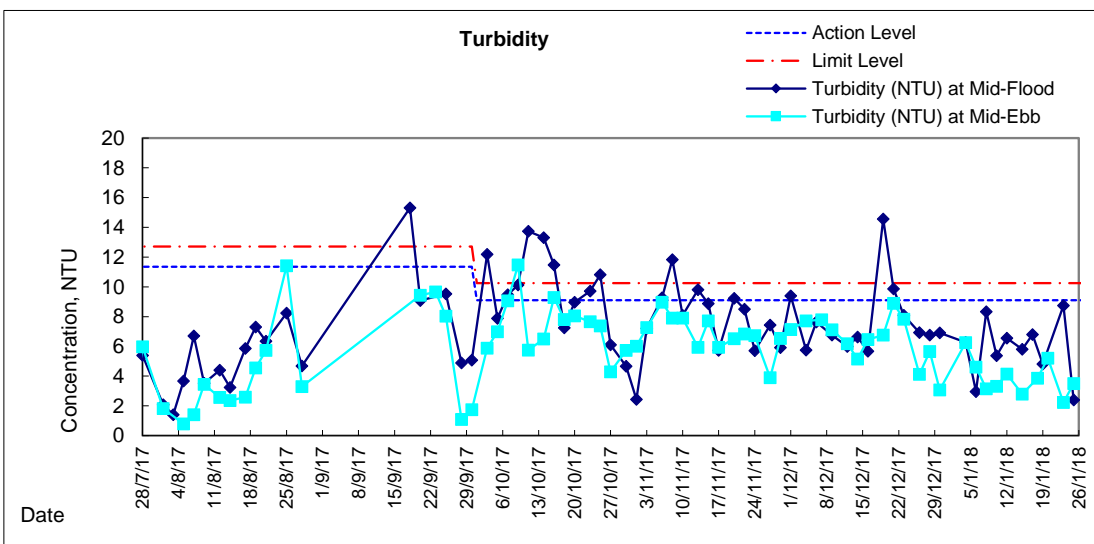
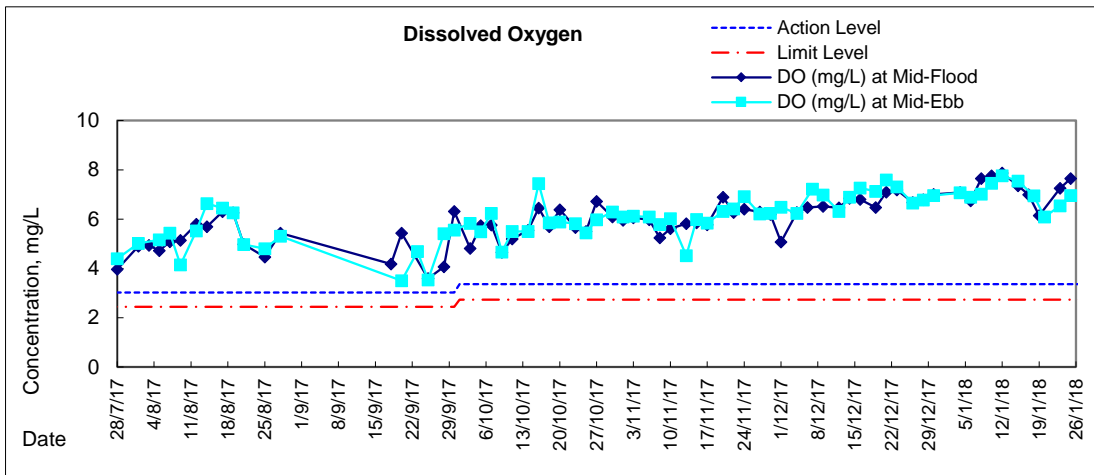


### Graphic Presentation of Water Quality Result of P3 - APA



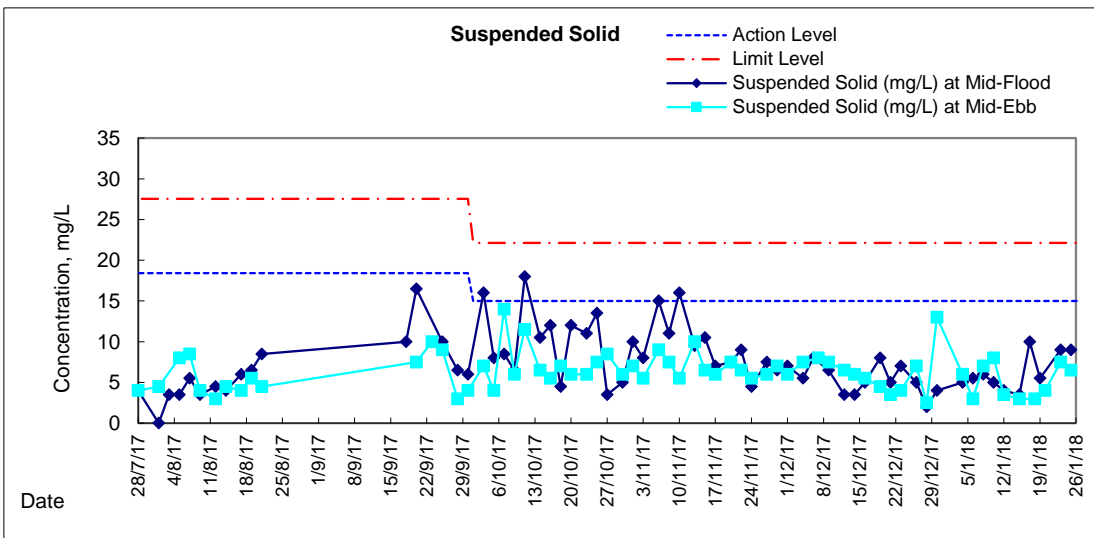
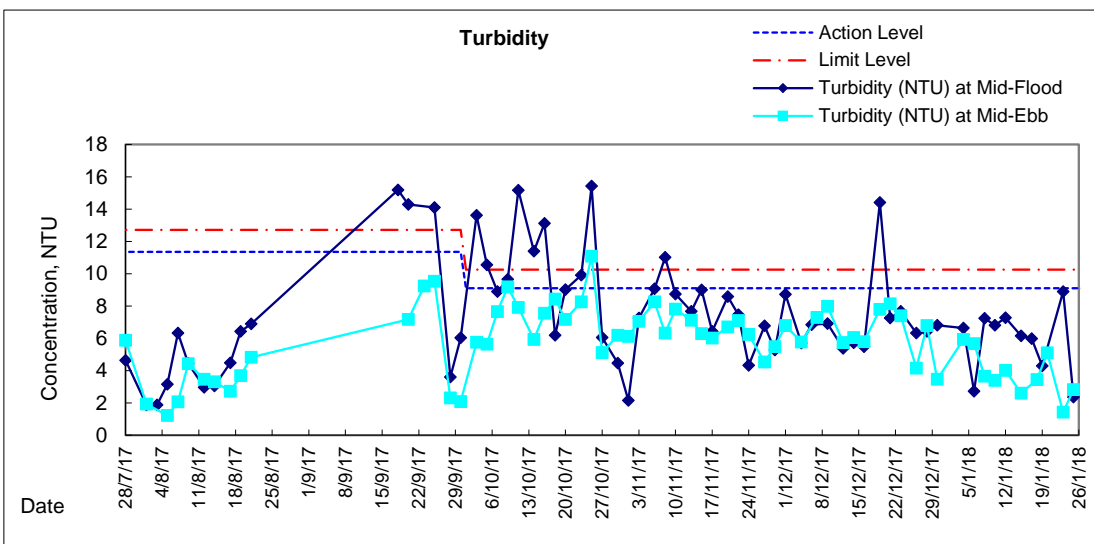
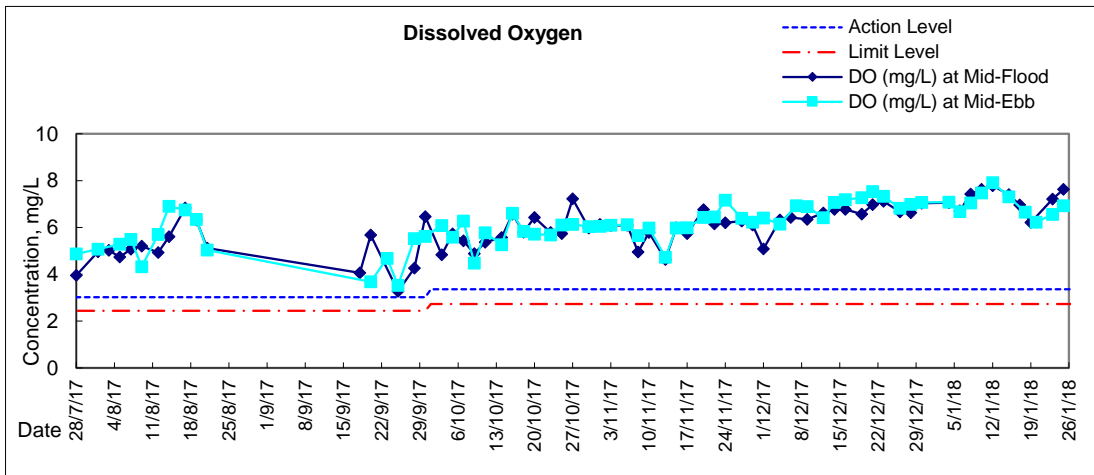


### Graphic Presentation of Water Quality Result of P5 - WCT / RT / IT



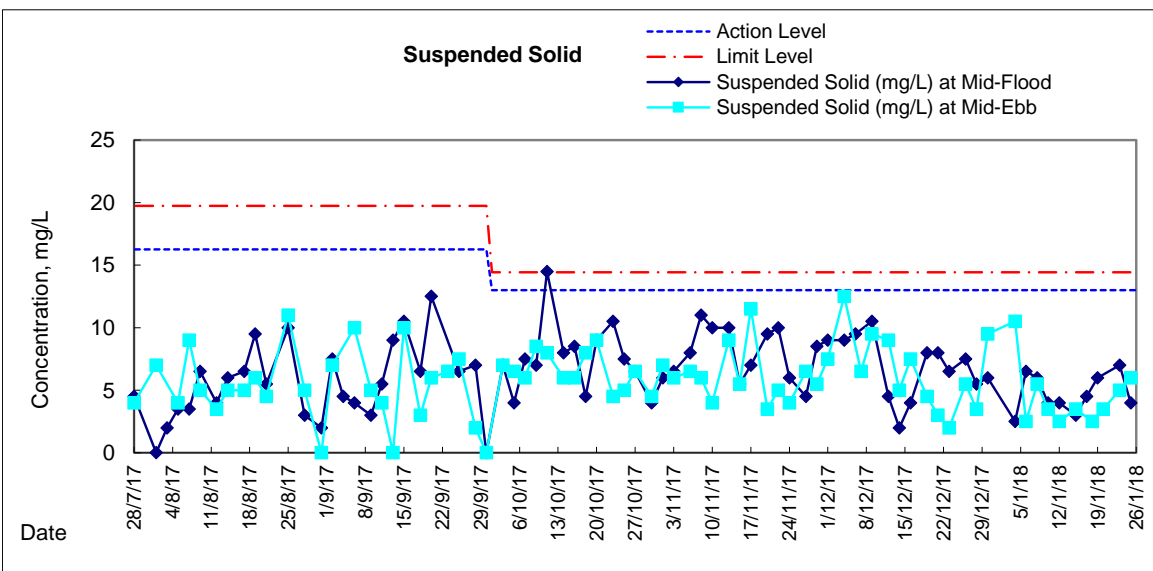
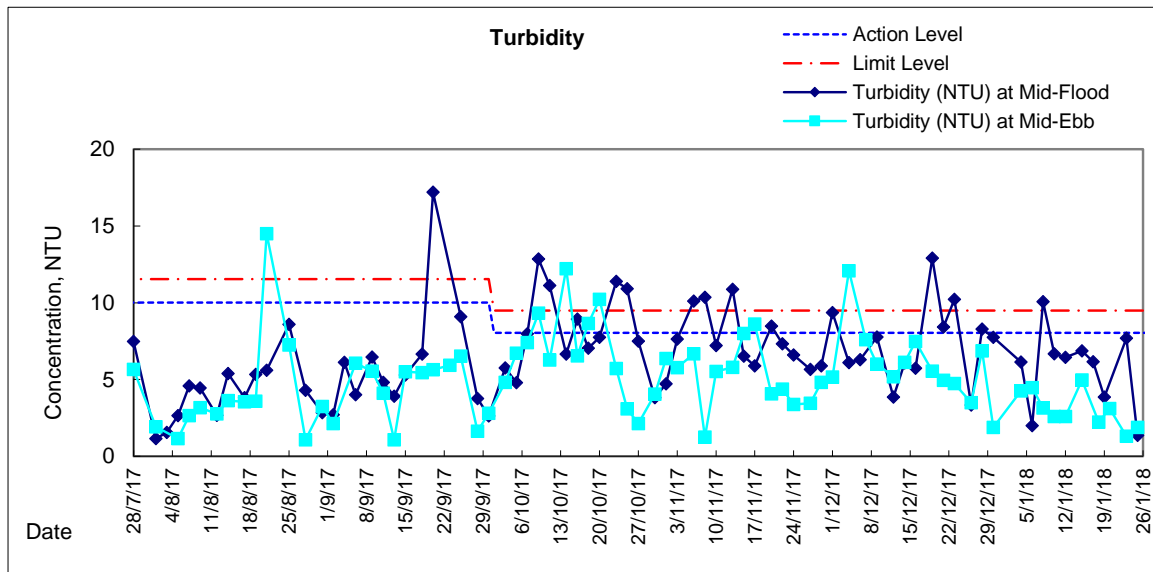
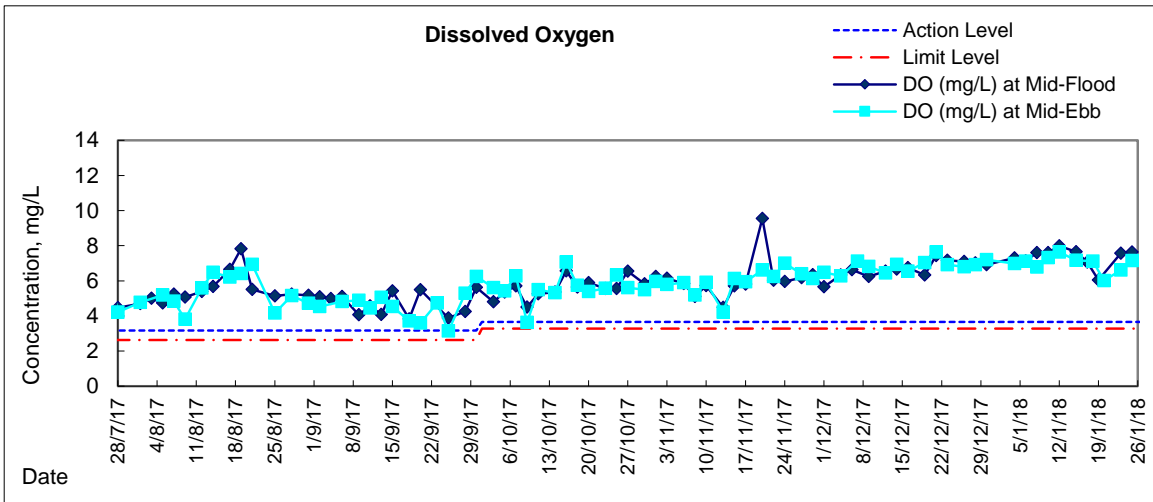


### Graphic Presentation of Water Quality Result of P4 - SOC



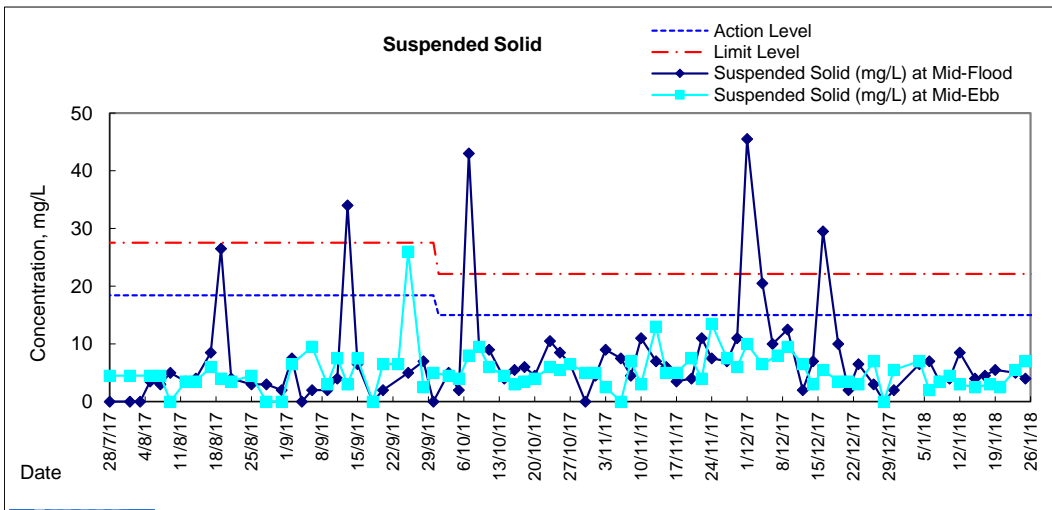
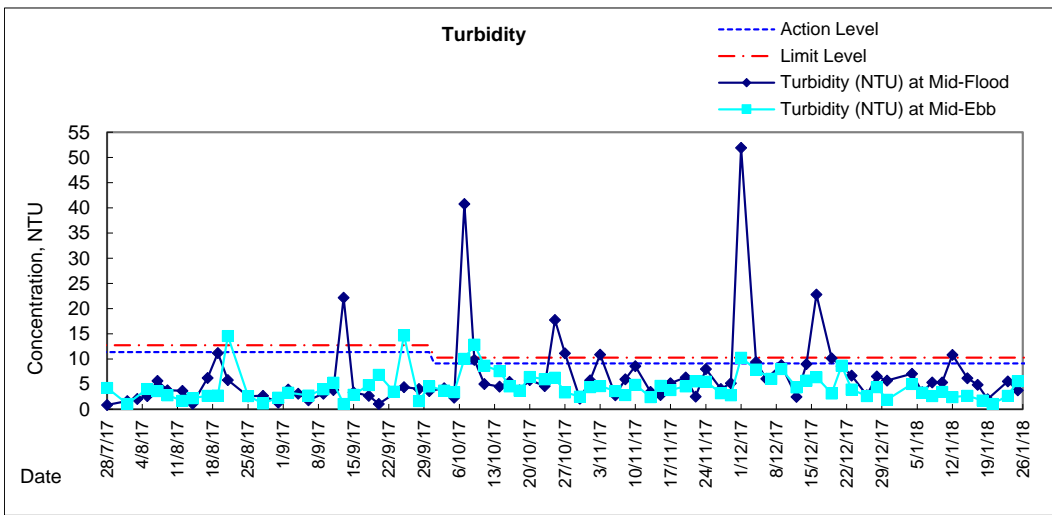
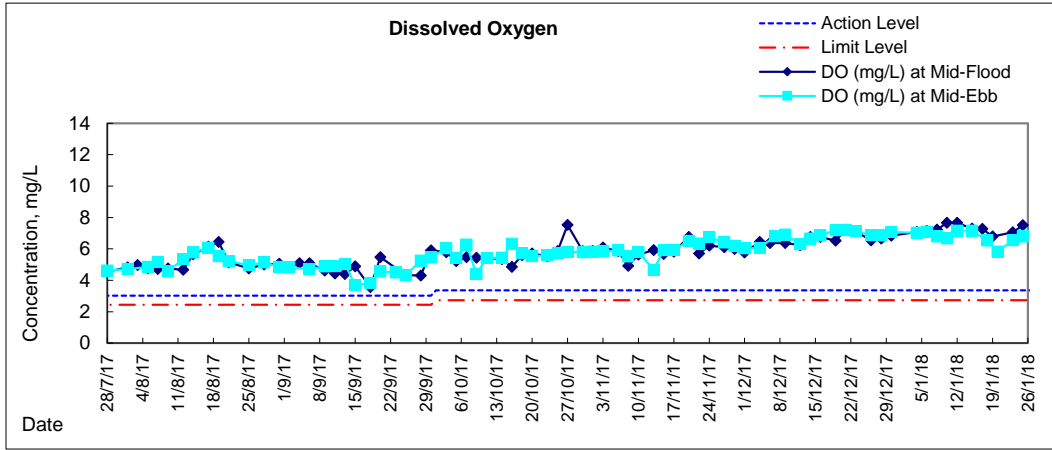


# Graphic Presentation of Water Quality Result of RW21-P789 - GEC/CRC/SHK





### Graphic Presentation of Water Quality Result of C7 - Windsor House







**Water Monitoring Result at C6 - Excelsior Hotel  
Mid-Flood Tide**

Date	Time	Weather Condition	Sampling Depth m		Water Temperature °C			pH			Salinity ppt		DO Saturation %			DO mg/L			
					Value	Average	Value	Average	Value	Average	Value	Average	Value	Average					
28/12/17	-	Fine	Surface	-	-	-	-	-	-	-	-	-	-	-	-	-	-	-	
	15:55		Middle	1.5	19.50	19.50	19.5	8.08	8.08	8.1	31.79	31.79	31.8	88.9	86.6	87.8	6.76	6.55	6.66
	-		Bottom	-	-	-	-	-	-	-	-	-	-	-	-	-	-	-	-
30/12/17	14:20	Fine	Surface	1.0	20.00	20.00	20.0	8.11	8.11	8.1	31.24	31.24	31.2	84.9	85.3	85.1	6.41	6.43	6.42
	-		Middle	2.0	-	-	-	-	-	-	-	-	-	-	-	-	-	-	-
	14:22		Bottom	3.0	19.70	19.70	19.7	8.11	8.11	8.1	31.09	21.09	26.1	87.5	87.6	87.6	6.65	6.66	6.66
3/1/18	-	Fine	Surface	-	-	-	-	-	-	-	-	-	-	-	-	-	-	-	
	17:30		Middle	1.5	19.30	19.30	19.3	8.06	8.06	8.1	31.54	31.54	31.5	91.4	91.4	91.4	6.98	6.98	6.98
	-		Bottom	-	-	-	-	-	-	-	-	-	-	-	-	-	-	-	-
5/1/18	-	Cloudy	Surface	-	-	-	-	-	-	-	-	-	-	-	-	-	-	-	
	18:02		Middle	1.5	18.20	18.20	18.2	7.99	7.99	8.0	32.04	32.04	32.0	89.3	89.5	89.4	6.98	7.00	6.99
	-		Bottom	-	-	-	-	-	-	-	-	-	-	-	-	-	-	-	-
8/1/18	12:30	Cloudy	Surface	1.0	18.00	18.00	18.0	8.13	8.13	8.1	31.46	31.46	31.5	95.0	94.8	94.9	7.46	7.45	7.46
	-		Middle	2.0	-	-	-	-	-	-	-	-	-	-	-	-	-	-	-
	12:32		Bottom	3.0	18.00	18.00	18.0	8.15	8.15	8.2	31.43	31.42	31.4	98.3	98.4	98.4	7.71	7.72	7.72
10/1/18	14:15	Cloudy	Surface	1.0	17.40	17.40	17.4	8.12	8.12	8.1	30.96	30.96	31.0	94.8	94.8	94.8	7.54	7.54	7.54
	-		Middle	2.0	-	-	-	-	-	-	-	-	-	-	-	-	-	-	-
	14:17		Bottom	3.0	17.00	17.00	17.0	8.16	8.16	8.2	30.19	30.19	30.2	99.5	99.5	99.5	7.97	7.97	7.97
12/1/18	16:05	Fine	Surface	1.0	17.10	17.10	17.1	8.18	8.18	8.2	31.08	31.08	31.1	93.7	94.0	93.9	7.48	7.50	7.49
	-		Middle	2.0	-	-	-	-	-	-	-	-	-	-	-	-	-	-	-
	16:07		Bottom	3.0	16.60	16.60	16.6	8.18	8.18	8.2	31.04	31.04	31.0	97.9	98.4	98.2	7.88	7.82	7.85
15/1/18	14:45	Fine	Surface	1.0	17.70	17.70	17.7	8.18	8.18	8.2	31.04	31.04	31.0	84.7	84.8	84.8	6.68	6.69	6.69
	-		Middle	2.0	-	-	-	-	-	-	-	-	-	-	-	-	-	-	-
	14:47		Bottom	3.0	18.50	18.50	18.5	8.17	8.17	8.2	31.39	31.39	31.4	96.9	96.8	96.9	7.52	7.52	7.52
17/1/18	16:43	Fine	Surface	1.0	18.20	18.20	18.2	8.20	8.20	8.2	31.19	31.19	31.2	90.4	90.2	90.3	7.06	7.04	7.05
	-		Middle	2.0	-	-	-	-	-	-	-	-	-	-	-	-	-	-	-
	16:45		Bottom	3.0	18.70	18.70	18.7	8.19	8.19	8.2	31.26	31.26	31.3	92.8	92.4	92.6	7.18	7.14	7.16
19/1/18	-	Cloudy	Surface	-	-	-	-	-	-	-	-	-	-	-	-	-	-	-	
	20:30		Middle	1.5	18.00	18.00	18.0	8.04	8.04	8.0	31.82	31.82	31.8	79.8	81.7	80.8	5.70	5.84	5.77
	-		Bottom	-	-	-	-	-	-	-	-	-	-	-	-	-	-	-	-
23/1/18	-	Fine	Surface	-	-	-	-	-	-	-	-	-	-	-	-	-	-	-	
	11:15		Middle	1.5	18.60	18.60	18.6	8.23	8.23	8.2	31.04	31.04	31.0	92.2	92.1	92.2	7.16	7.15	7.16
	-		Bottom	-	-	-	-	-	-	-	-	-	-	-	-	-	-	-	-
25/1/18	14:30	Fine	Surface	1.0	18.10	18.10	18.1	8.34	8.34	8.3	31.33	31.33	31.3	99.4	98.9	99.2	7.76	7.72	7.74
	-		Middle	2.0	-	-	-	-	-	-	-	-	-	-	-	-	-	-	-
	14:32		Bottom	3.0	17.90	17.90	17.9	8.36	8.36	8.4	31.44	31.44	31.4	96.2	96.1	96.2	7.56	7.54	7.55





### Graphic Presentation of Enhanced Water Monitoring Results (DO) at C6 - Excelsior Hotel

